

RESEARCH ANNUAL REPORT 2022

DISCOVERY

Rewards of Mentorship

Career development is top of mind for Health Sciences researchers



TURNING RESEARCH INTO CURES



VISION, MISSION AND CORE VALUES

VISION

Transform health care and health science education and research to improve health and health equity for New Mexico and beyond.

MISSION

We exist to lead New Mexico toward health equity through our unique integration of care delivery, education, discovery and innovation and through advocacy and collaborations. We celebrate the diverse cultures and history of our state while creating an inclusive and compassionate community that makes UNM Health and Health Sciences an extraordinary place to study, work and serve.

CORE VALUES

HEALING: Both within individuals and among our communities in order to cultivate hope, care and joy.

EQUITY: For all New Mexicans in health, education and economic opportunity.

EXCELLENCE: In health care, education and research and in building a place where people seek to study, work and serve.

INNOVATION: In all aspects of our mission, enabling us to rise to the health, workforce and economic challenges of our time.

COMPASSION: In how we treat our patients, students, each other and ourselves.

SERVICE: Accountable to our diverse communities across New Mexico.

Managing Editor

Michael Haederle

Art Director

Sara Mota

Contributing Editor

El Webb

Photography

Chris Corrie

Byron Hughey-Geer

Jett Loe

Design Support

Sarah Head

Copyediting Support

Elizabeth Sandlin

© 2023 The University of New Mexico Health Sciences Office of Research

Special thanks to Aida Andujo, Jade Knight and James MacFarlane for their assistance

hsc.unm.edu/research

Cover: Selina Garcia, PhD

TABLE OF CONTENTS

LETTERS

From the Executive Vice President for Health Sciences &
Chief Executive Officer for the UNM Health System 02

From the Interim Vice President for Research 03

FEATURED STORIES

The Rewards of Mentorship: Career Development is
Top of Mind for Health Sciences Researchers 04

Multiplier Effect: UNM Health Sciences Research Leads
to New Startups and Job Creation for New Mexicans 08

The Promise of Autophagy: AIM Center Director Vojo Deretic
Reflects on Past Accomplishments and Future Plans 10

Research Cores and Shared Facilities 13

Native Knowledge: Health Sciences Researchers Build
Record of Engagement with American Indian Communities 14

Funding the Fundamentals: Health Sciences Partnerships
with Taxpayers and Governmental Entities Support
Key Research Priorities 18

Donor Dollars: Philanthropic Support Enables Critical Pilot
Research at The UNM Comprehensive Cancer Center 20

2022 TRAINING GRANTS 24

2022 EXCELLENCE IN RESEARCH AWARDS 28

RESEARCH 2022 CENTER LISTING 30

CONTRACTS AND GRANTS 31



From the

EXECUTIVE VICE PRESIDENT FOR HEALTH SCIENCES &
CHIEF EXECUTIVE OFFICER FOR THE UNM HEALTH SYSTEM



As Executive Vice President for Health Sciences and of CEO of our Health System, I'm fortunate to witness the life-changing teamwork and impact made by our faculty, staff and students in all our mission areas. It is an ongoing source of hope and inspiration. This annual report reflects the positive impacts that resonate throughout our community, state, nation and worldwide as a result of our groundbreaking research.

This year was our highest year in research grant funding. This report will showcase a few of the many studies, including on historic multigenerational trauma among Native American populations, movement disorder care and management, cancer etiology and treatments, and the training of the next

generation of researchers, just to name a few. Our training grants and career development initiatives are foundational to supporting our research mission. I am pleased to support increasing our extensive institutional support for research career development at the Health Sciences level, including K award and R grant writing, the Office of Research programs, and the CTSC program activities.

The report also shines light on our award-winning researchers whose work in the areas of viruses, neurological and behavioral health, gastrointestinal health, alcohol spectrum disorders, vaccine development and addressing health disparities demonstrate the meaningful progress our team is making toward improving health outcomes.

Since our last Research Report, we have updated the strategic plan for UNM Health and Health Sciences, that builds on the platform of the UNM 2040 Strategic Plan. Both of these plans are accessible on the Internet if you are interested to see the specifics. I am enthused by the energy and commitment of the many participants who shaped the plan, and how the work of the plan continues in implementation teams.

We have set high standards and goals to maintain and enhance our status as a national and global leader in research through investment in key areas such as faculty, career development, new cores, infrastructure, partnerships for collaborative research and pathways for retaining researchers to help solve pressing health challenges.

This is an exciting time to be at UNM. I am so appreciative of everyone's teamwork and commitment to improve health and health equity through all missions.

Douglas Ziedonis MD, MPH

Executive Vice President for UNM Health Sciences & Chief Executive Officer for the UNM Health System

From the

INTERIM VICE PRESIDENT FOR RESEARCH

As a proud UNM alumna, it is truly an honor to serve the research community at UNM Health and Health Sciences as interim Vice President for Research. I look forward to continue working with every single one of you.

I'm very pleased to report that UNM Health Sciences was awarded a record \$238 million in extramural research funding during FY 2022, yet another year of growth and advancing science. Our success in obtaining extramural funds at UNM Health Sciences continues to impact New Mexico as we promote health, advance knowledge and improve regional economies.

We play a critical role by bringing together research, education, intellectual and industry partners, communities and state agencies. We support the full spectrum of research – basic science, clinical, population science and implementation – as we continue our work in underserved and rural areas throughout New Mexico to identify barriers and best practices. We are fully committed to New Mexicans to transition from health disparities to health equity research.

In FY22, we continued our COVID-19 research; I am especially proud of our efforts to learn about vaccine hesitancy in pediatric patients, vaccine health equity and increasing vaccine access for vulnerable populations in New Mexico.

Furthermore, our researchers obtained funding from the Department of Defense to study non-invasive brain stimulation to treat mild traumatic brain injury in veterans. The UNM Comprehensive Cancer Center is finding ways to help people who have rare cancer mutations by enabling them to receive personalized cancer therapy. Training the next generation of scientists who will perform the full spectrum of research is a priority for us as an academic center.

The Cardiovascular Research Training Program was funded by the National Institutes of Health for the fifth cycle, and for the first time, the NM-INSPIRES

Center grant was funded by the National Institute of Environmental Health Sciences to support investigators conducting basic and translational studies that address the needs and concerns of New Mexico communities related to environmental health issues.

In the coming year, we expect to keep moving research forward: research means hope and it saves lives! We recognize and foster education, science, innovation and teamwork, and appreciate every member of the UNM Health and Health Sciences community who contributes to these efforts.

We will continue to advance knowledge across the research spectrum that ultimately helps people live healthier lives.

Hengameh Raissy, PharmD

Interim Vice President for Research, Health Sciences



THE REWARDS OF MENTORSHIP

CAREER DEVELOPMENT

IS TOP OF MIND FOR HEALTH SCIENCES RESEARCHERS

By Michael Haederle and El Webb

University of New Mexico Health Sciences investigators are rightly known for their work conducting laboratory, translational and community-based research aimed at diagnosing and curing disease and eliminating health inequities – but that’s just part of their mission.

An important part of a research faculty member’s job is mentoring the next generation of scientists.

At UNM Health Sciences, an array of grants and training programs offers career guidance to bioscience scholars, ranging from undergraduates to post-doctoral fellows and junior faculty members. This institutional support includes K award and R grant writing, Office of Research programs and support from the UNM Clinical & Translational Science Center, the colleges and the School of Medicine.

Mentorship takes many different forms, but most of the programs supporting it are sustained by grant funding from the National Institutes of Health (NIH).

For example, UNM hosts four diversity-themed T32 grants from NIH that support students in the Biomedical Sciences Graduate Program, as well as postdoctoral researchers, says Tom Resta, PhD, professor of Cell Biology & Physiology and senior associate dean for Research Education in the UNM School of Medicine.

The Cardiovascular Research Training Program, which has been in place since 1993, provides funding for



Kathryn Frieze, PhD, and Bryce Chackerian, PhD

six graduate students and two postdoctoral fellows. “I was actually supported by the grant as a BSGP student,” says Resta, a vascular physiologist who currently serves as the grant’s principal investigator.

“It has served to provide opportunities for under-represented minority predoctoral and postdoctoral trainees to gain research training in cardiovascular (CV) biology,” he says. “This grant has also been a catalyst for the development of an integrated program of research and training in CV sciences at the University.”

Additional T32 grants are in place for alcohol-related research and the study of infectious disease and inflammation, Resta says. And the Initiative to Maximize Student Development is a T32 aimed at promoting greater diversity among future biomedical science researchers.

UNM is also one of 21 institutions to have received an Institutional Research and Academic Career Development Award (IRACDA) from the National Institute of General Medical Sciences, focused on developing a diverse group of biomedical and behavioral scientists.

The award, now in its 15th year, supports UNM’s Academic Science Education and Research Training (ASERT) program, which provides three years of support for postdocs, with 75% effort devoted to research and 25% on education partnerships with Minority Serving Institution partners.

“When I heard about [IRACDA] I thought, ‘This is a perfect program for a place like UNM, where we are a Minority-Serving Institution and a Hispanic-Serving Institution, and we have a very diverse student population,’” says ASERT director Angela Wandering-Ness, PhD, a professor in the Department of Pathology and the Victor and Ruby Hansen Surface Endowed Professor in Cancer Cell Biology and Clinical Translation at the UNM Comprehensive Cancer Center.

Four ASERT fellows join the program each year, making for a total of 12 participants at any given time.

They are assigned faculty mentors and meet together monthly as a group, tending to bond as they discuss their research. “They start together,” she says. “They create this network where they can share common goals or problems they’re facing.”

The program has ASERT fellows working part-time at local Minority-Serving Institutions to gain experience teaching and mentoring minority students.

“The goal of that partnership is to have the fellows work with individuals who are involved heavily in teaching minority students who may not have role models or who may not have the opportunity to even get any sense of what research is about,” Wandering-Ness says.

Her devotion to career development was recognized by the American Association for the Advancement of Science with its 2020 Lifetime Mentor Award, and Wandering-Ness has been credited with having mentored nearly 300 trainees over three decades. But she points to some key mentors who encouraged her early in her career.

“It’s really important to give others the opportunity to find their path and their passion in science – or to figure out it’s not for them,” she says. “That really requires mentorship and talking with people. I love it, especially when I can do the research alongside of it.”

Another signature initiative is the KL2 Mentored Career Development Program, run through the UNM Clinical & Translational Science Center (CTSC). The KL2 scholars are junior faculty members who are developing their ability to secure independent research funding.

Four faculty members at a time are enrolled in the program for periods of up to five years, says program director Judy Cannon, PhD, an associate professor in Department of Molecular Genetics & Microbiology. They generally have 75% of their time protected so they can focus on research.



Tom Resta, PhD, with postdoctoral researcher Selina Garcia

“The NIH funds the positions, which pays for the scholars and some of the research,” she says. “They each have a clinical and a basic research mentor – usually senior faculty who are experts in that area.” Past participants have had success in achieving RO-1 grant funding, in large part due to the mentorship they have received, Cannon says. “This program has been highly successful. For those of us who had good mentors, you want to give back.”

Cannon recently took over as program director from Matthew Campen, PhD, a professor in the Department of Pharmaceutical Sciences. There is an expectation that the participants will publish two papers a year as first or last author, and that they will be writing proposals for internal pilot grants so that by the end of their second year in the program they will be ready to submit proposals for extramural grants, he says.

“It’s not about the money, it’s about the getting the experience in writing and having a line in the CV that makes you look more competitive in seeking NIH funding,” Campen says, noting that only one out of 10 mature faculty scientists will get funded in each round of grant awards.

Bryce Chackerian, PhD, Regent’s Professor and the Jeffrey Michael Gorvetzian Endowed Professor of Biomedical Research Excellence in Molecular Genetics & Microbiology, says mentoring plays an important role at UNM Health Sciences.

“It used to be unusual,” he says. “It used to be that there was a bit of sink-or-swim mentality. That definitely did not apply to me. I’ve had outstanding mentors throughout my career who’ve given me tons and tons of help. Now there are way more formalized ways of providing support to people.”

Effective mentorship entails seeing the trainees in full.

“Traditionally, faculty members are most comfortable talking about the science,” he says. “Part of it is just recognizing that there are additional needs that trainees have. I think being a good mentor is being a good person – listening to people. Sometimes I don’t have a lot of advice, but I can listen.”

Chackerian, who also serves as director of Postdoctoral Affairs, calls mentoring “the best part of my job. Seeing people succeed and find their careers is very rewarding.”



HOW MENTORING MADE A DIFFERENCE FOR ONE SCHOLAR

The UNM Transdisciplinary Research, Equity & Engagement (TREE) Center, funded by the National Institute on Minority Health and Health Disparities, also plays a significant role in providing career support to faculty members from Underrepresented Minorities. Since 2018, the program funded and supported 20 emerging scholars on 19 pilot research projects.

Through March 2022, TREE Center pilot project principal investigators produced 266 scholarly products, including one published book, two research reports, four policy briefs, five published book chapters, six diverse media products, 22 funded grants linked to TREE Center focus areas, 60 peer-reviewed journal articles, and 83 community and academic presentations.

Meanwhile, the UNM Undergraduate Pipeline Network (UPN), a program that allows undergraduate students to explore their interests in research and health sciences, is hosting its 14th cohort. The project provides students with essential skills needed for higher education and offers a path to discover new interests. The program provides the opportunity for students to choose from several areas of research at UNM Health and Health Sciences.

Research topics include biochemistry and molecular biology, neurosciences, pathology, brain and behavioral illnesses, cancer, child health research and more. The program period covers 10 weeks in the summer and scholars participate in the program a minimum of 40 hours per week.

“The whole idea is to get students involved in research,” says UPN program director Jennifer Gillette, PhD, an associate professor of Pathology in the School of Medicine. “The goal is to get these students exposed to research, because a lot of them haven’t had an opportunity like this before. It’s really hard to know what you want to do if you don’t know what’s available to you.” 🍷

When Kathryn Fietze completed her PhD in biomedical sciences at The University of New Mexico in the spring of 2010 she found herself at a crossroads.

“At the time I was pregnant with my daughter,” she says. “I was trying to figure out what to do with my life, how to balance having a family, being a scientist, and if I wanted to stay in New Mexico.”

She reached out to Bryce Chackerian, PhD, now the Regents’ Professor in the Department of Molecular Genetics & Microbiology (MGM), in whose lab she had done a rotation as a graduate student, to see if she could do a postdoc with him.

“Bryce is and was an excellent mentor for me and many other people here,” she says. The experience helped her clarify her options. “I realized that I really enjoyed research and I wanted to continue doing research in an academic setting.”

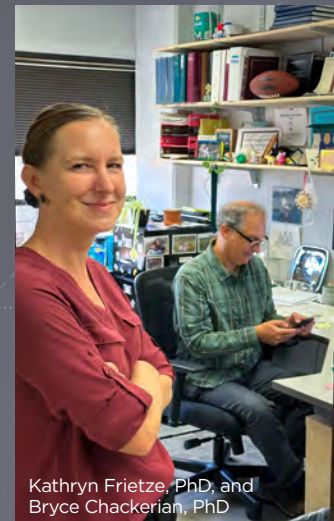
Fietze focuses on using virus-like particles to craft vaccines targeting various conditions. She currently is developing a vaccine to protect against chlamydia infections and another capable of blocking opioid receptors in the brain to protect against substance use relapse.

In 2016 she joined a program that would put her on track to join the MGM faculty, and a year later, she applied to the KL2 mentored scholars program, which pairs participants with multiple faculty mentors.

Fietze now counts as mentors Thomas Byrd, MD, director of the Center for Infectious Disease and Immunity, and Judy Cannon, PhD, associate professor in MGM and KL2 program director. Previous program director Matt Campen, PhD, “was highly involved in mentoring me and the other scholars,” Fietze says.

Fietze completed the KL2 program earlier this year as an assistant professor with her own lab and an R01 grant from the National Institutes of Health. She’ll be going up for tenure soon.

“I probably had more mentoring than most people get,” she says. “I’ve told other people if I was going to fail, it was going to be completely on me, because I had every support possible. Everything was set up for me to succeed.” 🍷



Kathryn Fietze, PhD, and Bryce Chackerian, PhD

MULTIPLIER EFFECT MULTIPLIER EFFECT

UNM Health Sciences Research Leads to New Startups and Job Creation for New Mexicans

By Michael Haederle

University of New Mexico Health Sciences researchers are continually on the hunt for new diagnostics and therapeutics to treat disease, work that will benefit New Mexicans – and ultimately the entire world.

But that research activity, which in FY 2022 was supported by nearly \$240 million in extramural funding, also provides substantial economic benefits, both to the University and the state as a whole.

Grant funding from the National Institutes of Health and other entities supports employment for highly trained personnel who are conducting basic and translational research – which in turn is sowing the seeds for new biotech startups that are creating jobs in New Mexico.

In fact, 70-plus startups have been launched over the past 20 years resulting from research conducted at UNM Health Sciences, and more than 160 inventions and patents have been logged in just the past four years.

“There is a lot of research that has been converted into products and things that are out there in the marketplace,” said Lisa Kuuttila, CEO and chief economic development officer for UNM Rainforest Innovations, the entity charged with commercializing new technology developed at the University.

A prime example is Intellicyt, an Albuquerque-based firm started in 2006 that manufactures high throughput flow cytometry equipment based on technology co-invented by Larry Sklar, PhD, a retired professor in the UNM Department of Pathology. “That’s a very early one from the Health Sciences Center,” she said.

A more recent startup is Circular Genomics, which is commercializing circular RNA technology developed by Nikolaos Mellios, PhD, an associate professor in the Department of Neurosciences. Circular RNAs are non-coding bits of genetic material that play an important role in brain function.

“Their initial product will be a diagnostic for what type of depression a person has so that they can be treated with the right medication,” Kuuttila said. “Long term, it could potentially treat various mental health conditions.”

UNM’s technology transfer policy allocates 40 percent of the royalties it receives from licensees to the inventors, 40 percent to UNM Rainforest and 20 percent to the University itself, she said.

Inventors often play some role in a new startup company, sitting on a scientific advisory board or even taking a sabbatical to play a more active part, Kuuttila said. “The activity has grown over the years, for sure, both in terms of new inventions that we get from Health Sciences, the number of patents that ultimately get issued based on that work and startup companies.” The financial rewards to the University from newly licensed technology are just part of the picture, she said.

“Across the country, universities really care about commercialization of their research results. Money is one piece of it, of course, but the public benefit is the first priority for us and for the market,” she said. “We can get new discoveries into the market from Health Sciences as a direct benefit to patients and doctors who are trying to diagnose and treat various conditions. The public benefit is tremendous. It can be transformative.”

New biotech startups provide broader benefit to the community in terms of job creation, Kuuttila said. Circular Genomics has fewer than 10 employees in its early stage of development, while Intellicyt employs about 120 people, with an average salary of close to \$100,000. “These are high-paying jobs,” she said. “These are the kind of jobs we want to be creating in our state.”

UNM Health Sciences is also playing an important role in fostering New Mexico’s emerging biotechnology sector. UNM plays a central role in supporting the New Mexico Bioscience Authority, which was created by state



Ryan Cangiolosi and Lisa Kuuttila at the UNM Rainforest

statute, said Ryan Cangiolosi, director of Economic and Community Development for UNM Health Sciences.

Its board includes two representatives each from UNM, New Mexico State University and New Mexico Tech, with administrative duties handled at UNM. Its president is David Perkins, MD, MPH, professor of Medicine. “In 2022 we had a stellar year with regards to several programs we had been working on,” he said.

The Bioscience Authority’s Community Readiness program works with cities and counties to identify turnkey-ready facilities that can be used by bioscience startups looking to relocate to New Mexico.

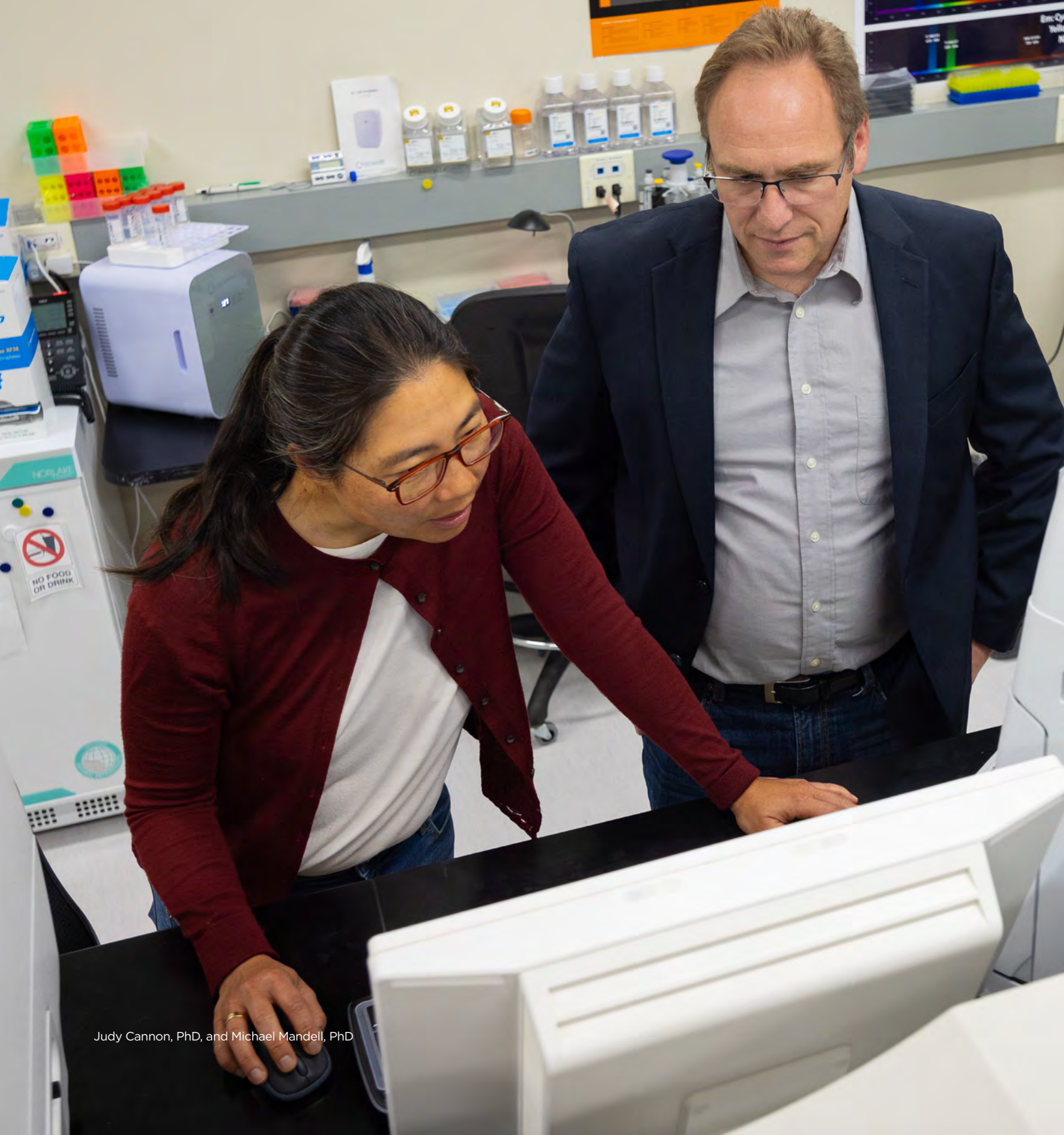
The Bioscience Authority also coinvested in a pilot grant for a flow cytometry startup, Cangiolosi said. “We were able to help them in a crunch time. It takes that consistent

raising of money until you can start making money.” Douglas Ziedonis, MD, MPH, executive vice president for Health Sciences and CEO of the UNM Health System, has made the technology transfer and commercialization a priority, Cangiolosi added. “He made economic development one of the pillars of the strategic plan.”

Meanwhile, UNM cancer researcher Eric Prossnitz, PhD, a Distinguished Professor in the Department of Internal Medicine, helps lead ASCEND, a regional technology transfer accelerator hub for universities in seven Mountain West states funded by a Small Business Technology Transfer award from the National Institute of General Medical Sciences.

“Their role is to help researchers take their innovation to market as a product,” Cangiolosi said. 🌱

The Promise of **AUTOPHAGY**



Judy Cannon, PhD, and Michael Mandell, PhD

AIM Center Director Vojo Deretic Reflects on Past Accomplishments and Future Plans

By El Webb

The University of New Mexico's Autophagy, Inflammation and Metabolism (AIM) Center of Biomedical Research Excellence is a technological hub for cutting-edge research in a promising area of biomedical study.

Situated in Reginald Heber Fitz Hall on UNM's North Campus, the AIM Center is known for research on autophagy and its intersections with inflammation and metabolism in the disease process. It affords a valuable resource for developing innovative approaches for treating a wide spectrum of diseases.

"A new tool – a new process – is always precious," said AIM Center director Vojo Deretic, PhD, chair of the Department of Molecular Genetics & Microbiology in the UNM School of Medicine. "We don't always come across those things. That's why the Center and the worldwide community of scientists are engaged in studying this process,"

Deretic, who received his undergraduate, doctoral and postdoctoral education in Belgrade, Paris and Chicago, is one of a small group of scientists from around the world who have contributed to the understanding of autophagy.

What exactly is autophagy?

Derived from the Greek words "autos," meaning self, and "phagomai," meaning to eat, autophagy is a process that acts as the body's cellular recycling system. Over time, cell parts can become defective, deposited as waste inside an otherwise healthy cell. Autophagy enables the cell to disassemble its debris, repurpose the salvageable bits and discard the parts it no longer needs.

Scientists have increasingly focused on autophagy over the past 50 years.

The identification of autophagy-related genes in yeast in the 1990s allowed researchers to deduce the mechanisms of autophagy, which eventually led to

the award of the 2016 Nobel Prize in Physiology or Medicine to Japanese researcher Yoshinori Ohsumi, who also demonstrated a similar process in humans.

"It's rare that only one person gets it, but he was the sole winner that particular year," Deretic said. "And him winning the Nobel Prize for autophagy tells you the significance for the broad range of disease and health, and that it holds promise."

AIM Center researchers study how autophagy intersects with a wide spectrum of diseases with metabolic and inflammatory aspects. "You have autophagy, inflammation and metabolism, so that's why the Center is called AIM," Deretic said. "It really coalesces a lot of different things and it's a big tent for many different interests."

Studies have shown that problems with autophagy may be associated with a number of diseases, including certain cancers, diabetes, Parkinson's and Alzheimer's, he said.

"There is a direct link in autophagy and those diseases," Deretic said. "We don't have a whole lot in our arsenal to either prevent or slow them down properly, so there are a lot of unmet needs where autophagy can provide new avenues for treatment."

Similarly, autophagy plays an important role when it comes to aging and longevity, Deretic said. As a person ages, autophagy becomes less efficient, which can lead to a build-up of cellular waste – and, in turn, cells that aren't functioning at their best.

During Phase 1 of a five-year National Institutes of Health (NIH) grant awarded in 2018, Fitz Hall was renovated to accommodate facilities and equipment to support the Center's research.

"The renovation allowed us to make this nice space for the Center in the existing old shell of Fitz Hall," Deretic said.



Vojo Deretic, PhD, and Eric Prossnitz, PhD

The grant's first phase also began to allow the AIM Center to lend support to junior and senior investigators through multi-year projects and pilots and fostering international collaborations.

During Phase 1, mentored junior faculty members won seven independent R01 grants, including four from Molecular Genetics & Microbiology: associate professor Xuexian Yang, PhD, associate professor Michael Mandell, PhD, assistant professor Eliseo Castillo, PhD, and assistant professor Alison Kell, PhD.

Grants were also awarded to Meilian Liu, PhD, associate professor of Biochemistry & Molecular Biology, Nikolaos Mellios, MD, PhD, assistant professor in the Department of Neurosciences, and Prashant Nighot, PhD, formerly an assistant professor in the Department of Internal Medicine.

"Those (grants) are not easy to get, so this is a big incubator for those kinds of things," Deretic said. "I think that's such a big accomplishment, because it enabled these individuals to get their independent funding."

As scientists collect more evidence about the relationships between autophagy and certain diseases, a clearer idea will begin to emerge of how this process may play a role in certain conditions and long-term health, Deretic said.

"This injection of funding is about building infrastructure, broadening the research capacity and bringing together a community of scholars," he said. "We want to bring up all these junior researchers and help them establish their careers. That's one of the main goals of the center. And with that comes the science, the research and publications."

NIH Phase 2 support for the AIM Center began Sept. 1, 2022.

"Now we're in the first year of Phase 2, and we're mentoring another set of junior faculty," Deretic said. "This is probably still going to last for a while, for the benefit of everyone at the Health Sciences Center." The AIM Center is supported by consecutive five-year, \$11 million grants from the NIH, and is funded as a Center of Biomedical Research Excellence by the National Institute of General Medical Sciences. 🚗

RESEARCH CORES AND SHARED FACILITIES

CUTTING-EDGE RESEARCH

Few academic health centers of our size are fortunate enough to have both a Clinical and Translational Science Award and a cancer center with comprehensive designation from the National Cancer Institute. These serve as the foundation of our ability to conduct cutting-edge research with an eye toward meeting the specific needs of our communities.

This work rests on an ability to create partnerships with communities to build trust and gain input in identifying key research priorities. In our experience, this is key to conducting studies whose outcomes will have a meaningful human impact.

Our state-of-the-art facility enables us to provide the best possible animal care for all teaching and research programs that use animals.

Cancer Center Cores and Shared Facilities

- Analytical & Translational Genomics
- Animal Models
- Behavioral Measurement & Population Science
- Bioinformatics
- Biostatistics
- Flow Cytometry
- Fluorescence Microscopy
- Human Tissue Repository & Tissue Analysis

CTSC Cores and Shared Facilities

- Biostatistics, Epidemiology & Research Design Support
- Community Engagement & Research Core Informatics
- Participant Clinical Interactions/Clinical Research Unit
- Translational Laboratory
- Regulatory Knowledge & Support

Other Cores and Shared Facilities

- Animal Resource Facility
- Electron Microscopy
- Pre-Clinical Imaging Core (7T MRI, Paul)
- Human Imaging Research Core
- Integrated Molecular Analysis Core (analytical chemistry, COBRE P20GM120422, Feng)
- Pre-Clinical Core (rodent behavior, imaging, histology, P20GM109089, Cunningham and Brigman)
- Clinical Core (neuropsychology, brain stimulation, neuroICU data, P20GM109089, Campbell and Torbey)
- Autophagy Core
- Inflammation & Metabolism Core

Research Training Support

- Cardiovascular Sciences T32 (Resta - six graduate and two postdoctoral positions)
- Fetal Alcohol Exposure T32 (Valenzuela - five graduate positions)
- Infectious Disease T32 (Ozbun - five graduate positions)
- Initiative to Maximize Student Development T32 (Kanagy, Cannon, Chackerian - five graduate positions)



NATIVE KNOWLEDGE

Health Sciences Researchers Build Record of Engagement with American Indian Communities



UNM TREE Center

UNM Health Sciences Newsroom

From tribal communities close to home to reservations far afield, University of New Mexico Health Sciences researchers have developed a broad network of partnerships in Indian Country. They are working to understand and address multiple health concerns, from diabetes to dementia to toxic exposures and mental health.

Healing Intergenerational Trauma

Maria Yellow Horse Brave Heart, PhD, a research associate professor in the Department of Psychiatry & Behavioral Sciences, launched the Iwankapiya-Healing study, a National Institute of Mental Health-funded project to help American Indians heal from historical

trauma arising from centuries of genocide. Working in the Dakotas and the Southwest, Brave Heart compared group interpersonal therapy sessions with sessions that combine group interpersonal therapy with the Historical Trauma and Unresolved Grief intervention that Brave Heart developed.

“In the Dakotas, the boarding schools were notoriously abusive or perceived as abusive by people,” says Brave Heart, who is Hunkpapa and Oglala Lakota. “What we do is talk about the impact of boarding schools on our people and the traumas that emerge from that.”

“ We have a really strong connection to Native American communities and we’ve made an important contribution. ”

-Johnnye Lewis, PhD

Multigenerational trauma leads to heightened risk for a laundry list of emotional problems, she says. “PTSD, depression, anxiety, difficulty sleeping – all of those kinds of things are framed in reaction to this massive group trauma and how it’s been passed on.”

Addressing Disparities in Alzheimer’s Diagnosis

Health Sciences researchers are developing a culturally appropriate toolkit to evaluate American Indian patients for Alzheimer’s and other dementias. Addressing Alzheimer’s Disease and Related Dementias Disparities: The American Indigenous Cognitive Assessment is supported by a \$10 million grant funded by the National Institute on Aging.

Tassy Parker, PhD, RN, the director of the UNM Center for Native American Health, is collaborating with researchers from the University of Minnesota Duluth and the University of Wisconsin-Madison.

“We’re applying an Indigenous theory of blending Indigenous knowledge and wisdom on equal footing with Western science for the benefit of elders, their families and their communities,” said Parker, professor in the Department of Family & Community Medicine and an enrolled citizen of the Seneca Nation. “By achieving our study aims we’ll deliver the first culturally adapted cognitive assessment battery for American Indian adults in the U.S.”

Tailoring Behavioral Health Interventions for Diverse Populations

The Transdisciplinary Research, Equity and Engagement Center for Advancing Behavioral Health (TREE Center), funded by a five-year, \$7 million grant from the National Institute on Minority Health and Health Disparities, brings together researchers from across the University to develop more effective behavioral health interventions for the state’s under-resourced, racially, ethnically and geographically diverse communities.

Center director Lisa Cacari Stone, PhD, associate professor in the College of Population Health, says the center strives to partner with under-served communities to conduct solutions-focused research with them, rather than on them. The researchers study how social determinants, including historical trauma, adverse childhood experiences and the combined effects of poverty and discrimination, affect behavioral health.

Another goal is to build the underrepresented minority research workforce. “UNM is well positioned to train and mentor Native American minorities,” Cacari Stone said. “As it is now, Native American researchers receive less than 1 percent of NIH funding and Latinos are under-represented. We need to focus on training and retaining these researchers.”

Partnering for Community-Based Participatory Research

Nina Wallerstein, DrPH, a professor in the College of Population Health and director of the Center for Participatory Research, developed an intergenerational family-and-culture-centered substance abuse prevention program, working with people at Jemez Pueblo, the Ramah chapter of the Navajo Nation and the Mescalero Apache community.

The Family Listening/Circle Program works with 4th graders and their families to recapture traditional forms of cultural transmission, such as family dinner storytelling where elders connect with children, and supports enhanced child-family communication and psycho-social coping through traditional dialogue, Indigenous languages and empowerment.

The project aims to strengthen tribal research capacities by illustrating how community-based participatory research can integrate evidence-based and culture-centered practices to create programs that generate community ownership and sustainability.

“

UNM is well positioned to train and mentor Native American minorities. ”

- Lisa Cacari Stone, PhD

Engagement With Zuni Pueblo

Vallabh “Raj” Shah, Regents’ professor emeritus in the UNM School of Medicine, and his team of community health representatives (CHRs) have worked with people at Zuni Pueblo living with diabetes and/or chronic kidney disease for more than two decades.

Zunis face about a 20-fold chance of developing end-stage renal disease. Shah’s Zuni Kidney Project, a joint venture with tribal leadership and the Indian Health Service, started out studying genetics of the Zuni population to understand the high disease prevalence, but now uses disruptive innovation to prevent it.

CHRs visit patients’ homes and provide care using portable medical instruments. The model also makes use of motivated text messaging. These interventions have produced impressive results: 90 percent of participants improve their patient activation scores and see significant declines in body mass index and disease markers.

Shah and Carla Herman, MD, professor in the Division of Geriatrics, found that more than half of Zuni elders reported falls in the previous year. They received a five-year, \$2.5 million grant from the National Institutes of Health to study whether CHR-led fall-risk screening and an evidence-based exercise program will show results.

Meanwhile, Shah and neurologist Gary Rosenberg, MD, director of the UNM Center for Memory & Aging, are working with Zuni elders on a first-of-its-kind study conducted by the UNM Alzheimer’s Disease Research Center. By administering cognitive screening and conducting brain scans in a mobile MRI scanner, scientists hope to fill a gap in national Alzheimer’s disease databases relating to American Indians.

Native American Environmental Health Equity Research


For more than 20 years Johnnye Lewis, PhD, has collaborated with Native American tribes to study how environmental factors affect the health of people in Indigenous communities.

Lewis, research professor emerita in the College of Pharmacy, co-leads the Center for Native American Environmental Health Equity Research, a partnership that includes Crow, Sioux and Navajo communities that is funded by the National Institute of Environmental Health Sciences. A grant extension through 2025 changes the focus to how solid waste disposal techniques in tribal communities, especially burning plastics, exacerbate metals exposures and increase disease risk.

She is also the principal investigator of the Navajo Birth Cohort Study/Environmental influences on Child Health Outcomes, which studies the effects of metals exposure in parents living near abandoned uranium mining sites on the Navajo reservation and tracking those effects during pregnancy and in the first years of a child's life.

The study found higher-than-normal metals levels in participants and suggests that being exposed to a combination of metals during pregnancy increased the likelihood of pre-term birth; that some babies are born with high levels of uranium and other metals; and that there is evidence that these exposures in children continue to increase at least through early childhood.

Lewis also co-leads the UNM METALS (Metal Exposure and Toxicity Assessment on Tribal Lands in the Southwest) Superfund Center, focused on integrated health-based and environmental science research within Native American communities. The work has led to the important finding that the material left behind in some mining sites, when exposed to the weather, is reduced to nanoparticles, making them potentially even more dangerous.

“We have a really strong connection to Native American communities and we’ve made an important contribution,” Lewis says. “We’ve shown the value of the approach of moving from the environment to people to the laboratory and back to people.” 

Funding the Fundamentals



Health Sciences Partnerships with Taxpayers and Governmental Entities Support Key Research Priorities

Taxpayer support and strategic partnerships between local, state and federal governments and The University of New Mexico Health Sciences offer vital funding for research and education benefiting all New Mexicans.

Recent and ongoing construction projects on UNM's North Campus and the Health Sciences Rio Rancho campus provide tangible evidence of this support.

The support also takes the form of targeted Congressional and legislative appropriations that enable key projects to go forward.

Here are some recent highlights:

Interdisciplinary Substance Use & Brain Injury (ISUBI) Center – The two-story, 15,700-square-foot new wing on the west side of Domenici Hall on UNM's North Campus was dedicated on Feb. 16, 2023. It houses basic research facilities to enable state-of-the-art closed-loop recording and stimulation of brain activity in both human and animal subjects and advanced computational resources. It also offers simulated settings to test behavioral interventions.

The project's \$12 million price tag included a five-

year, \$4 million construction grant from the National Institutes of Health, and \$8 million in UNM Health Sciences funding. The facility is expected to play a key role in supporting President Garnett Stokes's Substance Use Grand Challenge, as well as UNM's Centers of Biomedical Research Excellence.

ISUBI will also serve as a regional and national hub for clinical trials, and be a resource for colleagues in the Clinical and Translational Research Infrastructure Network and the Mountain West Consortium.

Nene & Jamie Koch Comprehensive Movement Disorder Center (CMDC) was dedicated on Nov. 1, 2022.

The CMDC is the state's first and only comprehensive facility for the care and management of Parkinson's disease and other movement disorders. It encompasses 16,246 square feet and includes 17 exam rooms, three treatment rooms, two research rooms, speech therapy and a rehabilitation gym with a patient lift track.

The CMDC will host a multidisciplinary team that includes movement disorder clinicians, rehabilitation medicine (including physical therapy, speech therapy

and occupational therapy services), neuropsychology and case management services, said clinic co-director Amanda Deligtisch, MD, associate professor in the Department of Neurology.

“To be able to bring patients in and to have space just to do our clinical trial work is huge,” she said. “If I have a patient who is interested in clinical trials in my office. I can move them over to another room and they can meet with a research coordinator then and there, because my research coordinators are on site.”

The new center was nearly four years in planning. In 2019 the New Mexico Legislature allocated \$3.5 million from FY 2020-2023 for the project, matched by \$3.5 million in Health Sciences funding.

College of Nursing and Public Health Excellence Building

The UNM College of Nursing and the College of Population Health (soon to transition to an accredited School of Public Health), will soon be housed in a new building to the west of the Domenici Center for Health Sciences Education.

The 93,750-square-foot College of Nursing building will support the enrollment of more nursing students while, for the first time, including a research wet lab.

This building was designed to meet LEED Silver v.4 certification and promote “science on display.” It has also been designed to further reduce UNM energy consumption by including energy efficient lighting, equipment and building control systems, insulated and high reflective roofing, use of natural day lighting and low water usage plumbing fixtures.

Project construction is supported by \$30 million in proceeds from a voter-approved general obligation bond, \$2.5 million in a special appropriation from the New Mexico Legislature and \$10.7 million in Health Sciences matching funds.

UNM Center of Excellence for Orthopaedic Surgery & Rehabilitation

The University of New Mexico Center of Excellence for Orthopaedic Surgery & Rehabilitation opened its doors Dec. 1, 2021, on the UNM Health Sciences Rio Rancho Campus. The state-of-the-art facility unites clinical, educational and research activities under one roof. The two-story, 50,000-square-foot structure, located adjacent to UNM Sandoval Regional Medical Center in Rio Rancho’s City Center, includes exam rooms


for patients to consult with surgeons, an extensive orthopedics research laboratory and a rehabilitation facility.

At the ribbon-cutting, President Stokes described the structure as the “crown jewel” of UNM health facilities. “This kind of efficient innovation is entirely consistent with our role as New Mexico’s only Research-1 university,” she said.

The \$21 million project was funded through the City of Rio Rancho’s gross receipts tax revenues, with some of the money coming from cash on hand and \$15 million from bonds raised against future tax receipts.

Congressional Earmarks

Thanks to support from New Mexico’s Congressional delegation, \$3.87 million in specific federal funding was allocated to assorted UNM Health Sciences research projects during FY 2022. These included:

- Peer Support Model to Address Substance Use Disorders Treatment Engagement in Rural Communities – Project Lead, Annette Crisanti, PhD (SAMHSA, \$1.5 million)
- HSC Laboratory Facilities Improvements – Project Lead, Richard S. Larson, MD, PhD (HRSA \$1.5 million)
- Using Experiences with Virtual Home Visiting During COVID to Improve Rural Home Visiting – Project Lead Rebecca Kilburn, PhD (HRSA, \$473,000)
- Improving Forensic Identification of Unknown American Indian and Hispanic/Latinx American Decedents – Project Lead Heather Edgar, PhD (NIST \$374,000) 



DONOR dollars

Yolanda Sanchez, PhD, UNM Cancer Center director and CEO, and Sara Piccirillo, PhD



Philanthropic Support Enables Critical Pilot Research at The UNM Comprehensive Cancer Center

By Michael Haederle

The 100 or so scientists at The University of New Mexico Comprehensive Cancer Center are adept at securing grant funding to support their research.

But pilot research is required to compile the data needed to submit a successful grant application, with much of it funded through philanthropic donations that flow to the Cancer Center through The University of New Mexico Foundation.

“This research is often so novel that donor support is the only source of funding available to investigate the initial idea,” said Leigh Rowland, senior development director at the Foundation. “If there are results demonstrated through the initial research, the scientists and the Cancer Center can leverage it for sources of funding from the National Cancer Institute, National Institutes of Health or large foundations.”

Donor support plays a key role in sustaining pilot funding, Rowland said.

There were 27 ongoing pilot projects at the Cancer Center in FY 2022. Between 2015 and 2019, \$2 million from philanthropic donations were used in combination with developmental funds from the National Cancer Institute to fund 107 pilot grants.

This support resulted in 44 publications, eight clinical trials and an additional \$26 million in extramural grant funding for cancer research.

Fundraising for the Cancer Center often taps into an individual’s personal experience with cancer, Rowland said.

“The conversation often starts with, ‘I, my spouse or my family member has cancer,’” she said. “No one wants other people to go through what they went through. The only way to make that happen is through research.”

Alan Tomkinson, PhD, professor in the UNM Department of Internal Medicine and the Cancer Center’s associate director for basic research, said the Cancer Center has multiple mechanisms to support pilot studies.

Small grants totaling \$10,000 or less may be used to pay the Cancer Center shared resources to generate key preliminary data for grant applications. Additional funding is available to supply matching support for a postdoctoral fellow or graduate student working in a researcher’s laboratory, he said.

Full-on research pilot grants, which can range up to \$100,000, serve two purposes, Tomkinson said. One is to help junior faculty members expand their research into new areas.

“We like to use this money to build collaborations,” he said. “One of the things the Cancer Center does is it makes people from different disciplines talk to each other. We want to use that money to support



pilots where there are collaborations between at least two members.”

In addition, larger multi-year grants of up to \$200,000 are available to support large programmatic grant applications involving multiple investigators, Tomkinson said.

Meanwhile, the National Cancer Institute P30 grant that supports the Cancer Center includes development funds that can be combined with philanthropic gifts, he said.

The Cancer Center tracks the outcome of funded pilot projects, including any related publications, how many grant applications were submitted and whether any grants were funded. “The last time we did it, the return on investment was about nine-fold,” Tomkinson said.

Donor-supported pilot grant funding fosters collaboration among researchers in the Cancer Center’s three main mission areas: Cancer Control and Population Science, Cellular and Molecular Oncology and Cancer Therapeutics, he said.

“Our success in establishing these interactions, measured by the number of successful extramural grant applications and joint publications by two or more Cancer Center members, is a key metric when we are reviewed by the National Cancer Institute” Tomkinson said.

Some recent pilot projects that were supported by philanthropy include research into the oncolytic treatment of ovarian cancer, led by principal investigator Eric Barte, PhD, and co-PIs Sarah Adams, MD, and Mara Steinkamp, PhD. Oncolytic therapy entails introducing a virus that the patient’s immune system hasn’t encountered to create an inflammatory response within a cancerous tumor.

“This research is often so novel that donor support is the only source of funding available to investigate the initial idea.” - Leigh Rowland

The UNM researchers found a virus that successfully treats melanoma and also effectively targets ovarian cancer. “My colleagues and I would not have been able to pursue this line of study without pilot funding,” Bartee said. “Simply put: this project would not have happened.”

In another study, a team led by Sara Piccirillo, PhD, and co-PI Seth Newsome, PhD, are focused on brain tumor metabolism to look for weaknesses that could lead to breakthrough therapies.

Cancer incidence disparities in New Mexico are the subject of a third pilot project led by Yan Lin, PhD, with co-PIs Charles Wiggins, PhD, and Li Luo, PhD. The team seeks to understand how social determinants of health relate to the geographic factors that contribute to cancer disparities.

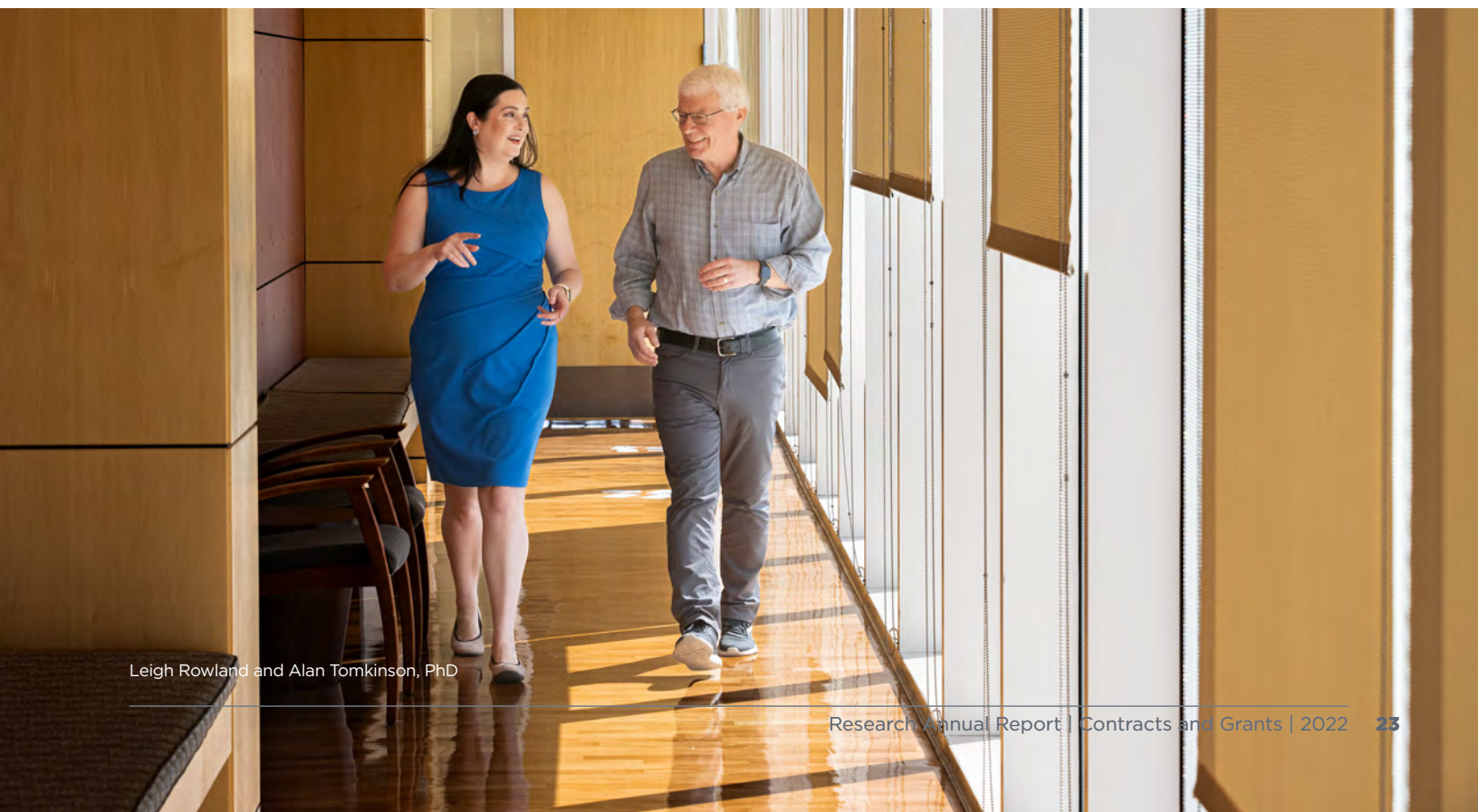
An additional source of philanthropic support is the Lobo Cancer Challenge, the annual bike/run fundraiser sponsored by the Cancer Center, which

last year raised \$350,000 to support research, Tomkinson said. Participants include patients, family and friends.

“They can specify what type of research they want the money they raise to go to,” he said. “We get to meet people who are interested in supporting research as a way to reduce the burden of cancer. Almost of all of them have had their lives touched by cancer in some way.”

In the end, Tomkinson said, philanthropic support for pilot funding helps sustain cutting-edge biomedical research, opening doors for advances in cancer prevention, diagnosis and treatment.

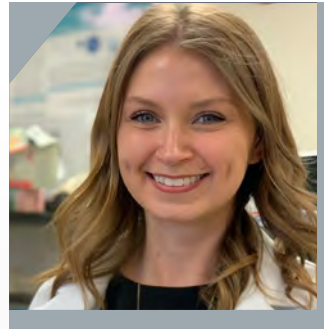
“The nice thing about the philanthropic funds is you can fund whatever you think is the most interesting and potentially impactful science,” he said. “Having access to those funds that you can invest in these early stages is really critical.” 🍷



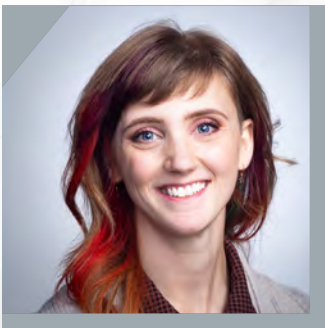
Leigh Rowland and Alan Tomkinson, PhD



Rosstin Ahmadian, PhD Candidate
Cell Biology & Physiology
F31 Scholar, NHLBI
Signaling mechanisms that regulate CH-dependent pulmonary hypertension
Mentors: Thomas Resta, PhD; Nikki Jernigan, PhD



Amanda Collar, PhD Candidate
Molecular Genetics & Microbiology
F30 Scholar, NIAID
Chlamydia trachomatis adhesion factor epitope-specific antibody responses, functionality, and roles in protection against urogenital infection
Mentor: Kathryn Fietze, PhD



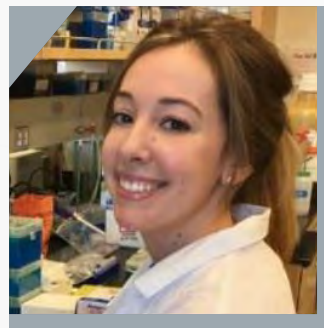
Elizabeth Bailey, PhD
Postdoctoral Fellow, Pathology
ASERT, NIGMS
Antigen valency, spacing and rigidity in aggregated receptors and site-specific phosphorylation events
Mentor: Diane Lidke, PhD



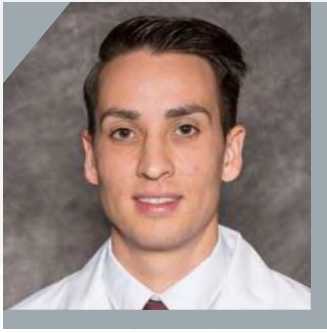
Thomas De Pree, PhD
Postdoctoral Fellow, Pharmaceutical Sciences
ASERT, NIGMS
Using ethnographic principles in community-based participatory research and critical multi-stakeholder analysis of the UNM METALS Superfund Research Center Program
Mentors: Debra MacKenzie, PhD; Johnnye Lewis, PhD



Christian Cabanlong, PhD
Postdoctoral Fellow, Pharmaceutical Sciences
ASERT, NIGMS
Trichloroethylene's role in the progression of autoimmunity
Mentor: Sarah Blossom, PhD



Alex Francian, PhD
Postdoctoral Fellow, Molecular Genetics & Microbiology
Developing vaccines for malaria and mosquito-borne viruses using virus-like particle vaccine platforms
Mentor: Bryce Chackerian, PhD

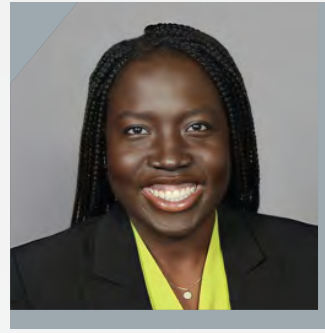


Marcus Garcia, PharmD

Postdoctoral Fellow, Pharmaceutical Sciences
ASERT, NIGMS

Assessing the value of longitudinal laboratory data for early identification of allograft dysfunction in renal transplant

Mentors: Matthew Campen, PhD;
Eliseo Castillo, PhD



Andzoa Jamus, PhD Candidate

Molecular Genetics & Microbiology
T32, NIAID

Investigating Chlamydia trachomatis vaccine candidate using a bacteriophage virus-like particle platform

Mentor: Kathryn Frieze, PhD



Samuel Goodfellow, PhD Candidate

Internal Medicine
T32 Scholar, NIAID

Studying the geographical distribution and genetics of orthohantaviruses in New Mexico host reservoirs and clinical samples

Mentor: Steven Bradfute, PhD

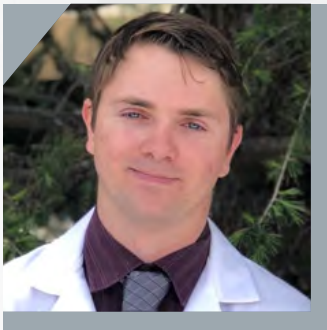


Stefan Klimaj, PhD Candidate

Molecular Genetics & Microbiology
T32, NIAID

Studying Seoul virus and interferon signaling and defining the role of innate immune signaling in endothelial activation

Mentors: Alison Kell, PhD; Michelle Ozbun, PhD

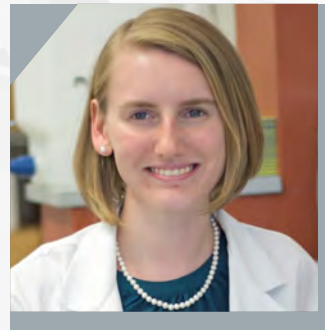


Russell Hunter, PhD Candidate

Pharmaceutical Sciences
F31, NICHD

Air pollution and reproductive toxicology

Mentor: Matthew Campen, PhD



Autumn LaPointe, PhD

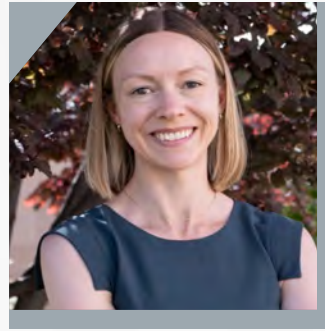
Postdoctoral Fellow, Molecular Genetics & Microbiology
T32 NIAID

Interferon activation and interferon-mediated restriction during hantavirus infection

Mentor: Alison Kell, PhD



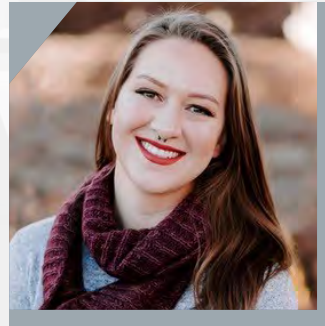
Nicole Maphis, PhD
Postdoctoral Fellow, Neurosciences
ASERT, NIGMS
Studying the molecular underpinnings and neural circuitry underlying alcohol use, alcohol-seeking behavior and complex cognitive tasks
Mentor: David Linsenbardt, PhD



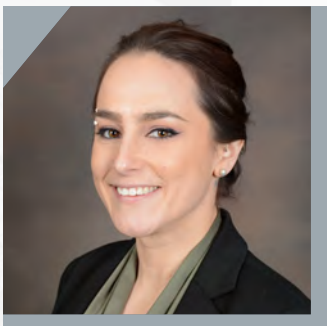
Valerie Morley, PhD
Postdoctoral Fellow, Internal Medicine
T32, NIAID
Using genomic data to understand the transmission and evolutionary dynamics of antibiotic resistance in Enterobacteriaceae in a hospital setting
Mentor: Daryl Domman, PhD



Cait McPherson, PhD
Postdoctoral Fellow, Anthropology
ASERT, NIGMS
Understanding how extragenetic inheritance shapes phenotypic variation and contributes to evolutionary processes
Mentors: Heather Edgar, PhD; Lexi O'Donnell, PhD



Bianca Myers, PhD Candidate
Neurosciences
T32, NIAAA
Studying the effect of alcohol exposure on glioblastoma progression
Mentor: Tou Yia Vue, PhD



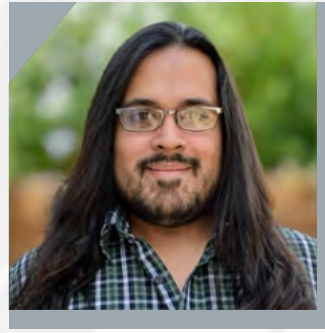
Emily Morin, PhD
Postdoctoral Fellow, Cell Biology & Physiology
ASERT, NIGMS
Examining the role of endothelial cell membrane cholesterol in regulating vascular ion channel function, with a focus on TRPV4 regulation
Mentor: Jay Naik, PhD



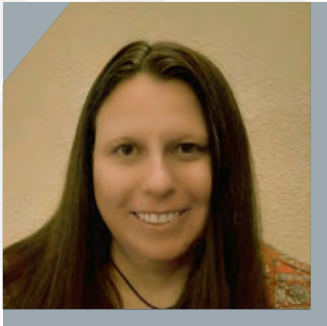
Abbey Myrick, PhD Candidate
Neurosciences
T32, NIAAA
How fetal alcohol spectrum disorder affects learning and memory; determining whether pattern of alcohol consumption during gestation affects the fetal mouse brain
Mentors: C. Fernando Valenzuela, MD, PhD; Julia Stephen; Samuel McKenzie, PhD



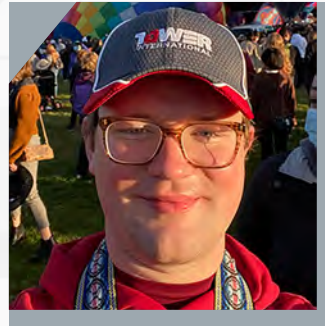
Seeun Oh, PhD
 Postdoctoral Fellow, Molecular Genetics
 & Microbiology
 T32, NIAID
Elucidating the mechanisms of Tripartite motif-containing proteins that govern autophagy maturation
 Mentor: Michael Mandell, PhD



Emmanuel Rosas, PhD
 Postdoctoral Fellow, Internal Medicine
 ASERT, NIGMS
Studying G-protein coupled estrogen receptor (GPER) in the development of anti-hormone resistance and whether approaches that prevent cross-activation of GPER reduce anti-hormone resistance in ERα-positive breast cancers
 Mentor: Eric Prossnitz, PhD



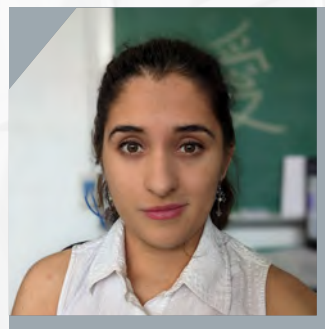
Julianne Peabody, PhD Candidate
 Molecular Genetics & Microbiology
 T32, NIAID
Immunology and infectious disease
 Mentors: Bryce Chackerian, PhD;
 Steven Bradfute, PhD



Andrew Skidmore, PhD
 Postdoctoral Fellow, Internal Medicine
 ASERT, NIGMS
Studying whether the deer mouse microbiome could influence the transmission of Sin Nombre hantavirus to humans
 Mentor: Steven Bradfute, PhD



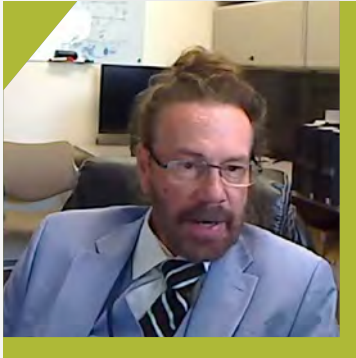
Arasely Rodriguez, PhD Candidate
 Neurosciences
 T32, NIAAA
Effects of prenatal alcohol exposure on enriched environment-mediated hippocampal neurogenesis and potential therapeutic intervention
 Mentor: Lee Anna Cunningham, PhD



Justine Zimmerly, PhD Candidate
 Neurosciences
 T32, NIAAA
Prenatal alcohol exposure and the neuroinflammatory and stress response to an acute stressor in adulthood
 Mentor: Erin Milligan, PhD

EXCELLENCE IN RESEARCH AWARDS 2022

The University of New Mexico Health Sciences Center's 14th Annual Research Day Awards Ceremony was held (via Zoom webinar) on June 6, 2023. The event, hosted by Hengameh Raissy, PharmD, Interim Vice President for Research, recognized six scientists who were nominated by their peers and selected for recognition by a faculty committee on the basis of their outstanding research contributions.



Douglas (D.J.) Perkins, PhD

Internal Medicine, *Basic Science*

D.J. Perkins conducts research in both the U.S. and Kenya, focusing on the human host-immune response to parasites and viruses, as well as host-parasite interactions. A primary goal is to understand how genes and gene pathways influence susceptibility to *Plasmodium falciparum*-induced severe malarial anemia in African children. He is also investigating the molecular basis of enhanced immune dysfunction in individuals co-infected with HIV, tuberculosis and malaria. Additional research activities include drug discovery for malaria, COVID-19 and mathematical modeling of infectious disease dynamics. His team also works to define the role of SARS-CoV-2 viral load dynamics on COVID-19 pathogenesis in disproportionately affected populations.



Davin Quinn, MD

Psychiatry & Behavioral Sciences, *Clinical Science*

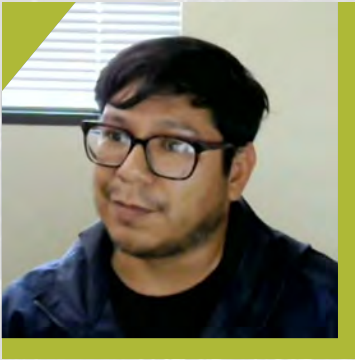
Davin Quinn uses cutting-edge approaches to personalize and optimize psychiatric neuromodulation, including transcranial direct current stimulation to treat prolonged post-concussive symptoms (PPCS) after mild traumatic brain injury. His work supports a novel theory of PPCS as a state of hyperconnectivity between nodes of the salience network responsible for internal sensations and the central executive network responsible for nonverbal executive functions. He has also expanded the local use of repetitive transcranial magnetic stimulation (rTMS) to treat major depression, and he has been principal investigator or collaborator for seven clinical trials using rTMS to modulate brain activity and treat symptoms of late-life depression, traumatic brain injury, alcohol use disorder and methamphetamine use disorder.



Larissa Myaskovsky, PhD

Internal Medicine, *Population Science*

Larissa Myaskovsky brings social and behavioral science to bear on health services research with a focus on the social determinants of health. She uses a multi-method and multi-disciplinary approach to identify disparities in health care processes and outcomes and to develop interventions to reduce health disparities in people with kidney disease and other chronic conditions. She has studied disparities in kidney transplantation and conducted health services and health care equity research in other vulnerable populations. She leads a pragmatic comparative effectiveness trial assessing whether streamlined clinic-scheduled kidney transplant evaluations, or peer navigators trained in motivational interviewing, may help Latinx and Native American patients with kidney failure overcome barriers to transplant listing.



Eliseo Castillo, PhD

Molecular Genetics & Microbiology, *Junior Faculty*

Eliseo Castillo's research focuses on defining the harmful effects of microplastics on gastrointestinal health. He has been actively recruited to give talks on the effects of microplastics on GI health, and his published work on microplastics garnered the attention of the Geological Society of America. He was invited to give a talk at the annual Geological Society of America Connects 2021 meeting. He is the lead principal investigator for a National Institutes of Health subaward titled, "Mechanisms of Modulation of Gut Immunity by Ingested Uranium and Mixed Metal Exposures," which runs through June 2027. During his time as a KL2 scholar at the Clinical & Translational Science Center, he acquired multiple NIH and internal awards to support his research activities.



Yiliang Zhu, PhD

Internal Medicine, *Team Science*

Yiliang Zhu has served as director of the UNM Clinical & Translational Science Center Biostatistics, Epidemiology & Research Design Core, as well as for the Clinical & Translational Research Infrastructure Network, a consortium of 11 universities in seven Mountain West states. He currently directs the biostatistics core for three UNM Health Sciences Centers of Biomedical Research Excellence. He has supported key UNM research initiatives with a diverse group of investigators and helped nurture a team science environment by providing research mentorship to new and mid-career investigators. He co-led a U.S. State Department-funded program to train village doctors in northwestern China with faculty from three UNM departments and faculty members and graduate students from two Chinese universities and a Chinese NGO specializing in rural development.



Patrick Rendón, MD

Internal Medicine, *Scholarship of Teaching and Learning*

Patrick Rendón has provided outstanding leadership, innovation and dedication to education at The University of New Mexico School of Medicine involving the development of curricula, direct education and training of undergraduate students, medical students, resident physicians, fellows and faculty. He has created new curricula for a range of learners, and in his role as associate program director, he co-created the Internal Medicine Board Preparation Curriculum, which has added an additional 20 sessions of board preparation material to the curriculum and created a rotating two-year curriculum based on the blueprint for the American Board of Internal Medicine. The board preparation sessions teach evidence-based methods of learning and test-taking to resident physicians. The curriculum turned the curve in the medicine board pass rate from 75% to the current rate of 95%.

RESEARCH 2022 CENTER LISTING

University of New Mexico Health Sciences research centers and institutes play a prominent role in many critical national networks. We thank the directors, faculty, staff and students who enrich the work of these groups. These entities include a range of research cores and shared facilities. Here's an overview:

Extramurally Funded Centers & Institutes

UNM Clinical & Translational Science Center (UL TR001449, Pandhi/Campen)
UNM Comprehensive Cancer Center (P30CA118100, Sanchez)
The New Mexico Integrative Science Program Incorporating Research in Environmental Sciences Center (P30ES032755, Blossom)
Autophagy, Inflammation & Metabolism Center (NIH/COBRE) (P20GM121176, Deretic)
Center for Brain Recovery & Repair (NIH/COBRE) (P20GM109089, Shuttleworth)
New Mexico Alcohol Research Center (P50 AA022534, Savage)
Transdisciplinary Research, Engagement & Equity Center for Advancing Behavioral Health (U54MD004811, Cacari Stone).
Center for Metals in Biology & Medicine (NIH/COBRE) (P20GM120422, Campen)
Center for Native American Environmental Health Equity Research (P50MD015706, Lewis/MacKenzie).
Metal Exposure Toxicity Assessment on Tribal Lands in the Southwest Superfund Research Center (P42 ES025589, Lewis)
New Mexico Exploratory Alzheimer's Disease Research Center (P20 AG068077, Rosenberg)
Center for Development & Disability (Administration on Intellectual and Developmental Disabilities, Moriarta)
Navajo Birth Cohort Study/Environmental Influences on Child Health Outcomes (UH3 OD023344, MacKenzie)
18/24 Healthy Brain and Child Development

National Consortium (U01 DA055359P, Bakhireva/Leeman)
Surveillance Epidemiology & End Results Program (HHSN26120180014I, Wiggins)
Prevention Research Center (U48DP006379, Davis)
IDeA State Pediatric Clinical Trial Network (2UG10D024947-03, Raissy/Kong)
Project ECHO (5 U10HA33225-04-00, Arora)

Other Centers, Institutes & Networks

Center for Infectious Disease & Immunity (Byrd)
Center for Disaster Medicine (Banks)
Institute for Ethics (Bolton)
Center for Forensic Imaging (Adolphi)
Center for Global Health (Perkins)
Center for HPV Prevention (Wheeler)
Memory & Aging Center (Rosenberg)
Center for Molecular Discovery (Buranda)
Center for Native American Health (Parker)
Institute for Resilience, Health & Justice (Girardet)
Center for Health Equity & Preparedness (Couig)
Center for Healthcare Equity in Kidney Disease (Myaskovsky)
Center for Participatory Research (Wallerstein)
Center of Excellence for Orthopedic Surgery & Rehabilitation (Schenck)
Substance Use Research & Education Center (Bakhireva)
Diabetes Prevention & Outcomes Center (Schade)
Epidemiology & Prevention Interdisciplinary Center for Sexually Transmitted Infections (Wheeler)
Center for Innovation in Health & Education (Frank)
Kidney Institute of New Mexico (Wagner)

Signature Research Programs

Brain & Behavioral Health Institute (Bakhireva & Bhaskar)
Cardiovascular & Metabolic Disease (Liu)
Infectious Disease & Immunity (Cannon)
Child Health Research (Girardet)
Environmental Health Sciences (Campen)

Contracts & Grants 2022

Office of the Executive Vice President	32
Office of the Vice President	32
Center for Infectious Disease & Immunity	32
Health Sciences Library & Information Center	32
Center for Memory & Aging	32
Office of Research	33
Clinical & Translational Science Center	33
College of Nursing	34
College of Pharmacy	34
College of Population Health	35
School of Medicine	36
Anesthesiology & Critical Care Medicine	36
Biochemistry & Molecular Biology	36
Biomedical Research Education	36
Cell Biology & Physiology	36
Comprehensive Cancer Center	37
Dental Medicine	38
Dermatology	38
ECHO Institute	38
Emergency Medicine	40
Family & Community Medicine	41
Internal Medicine	42
Molecular Genetics & Microbiology	44
Neurology	45
Neurosciences	45
Neurosurgery	46
Obstetrics & Gynecology	46
Office of the Medical Investigator	46
Ophthalmology & Visual Sciences	47
Orthopaedics & Rehabilitation	47
Pathology	47
Pediatrics	48
Psychiatry & Behavioral Sciences	51
Radiology	52
Surgery	52
UNM Hospital	52
UNM Medical Group, Inc.	52



**OFFICE OF
THE EXECUTIVE
VICE PRESIDENT -
HEALTH SCIENCES**

Michael Chicarelli

Rehoboth McKinley Christian
Health Care Services
Audiology Services \$25,000

Steven McLaughlin

Kindred Hospital (Transitional
Hospital Corp. of N.M.)
Medical Director Services \$250,000
Live Nation Worldwide, Inc.
Paramedics/EMT Services \$25,000

State of New Mexico
Medical Director, EMTs, Professional
Services \$56,133

A. Robb McLean

Bernalillo County
Behavioral Health Services \$100,000

City of Albuquerque
Assertive Community Treatment
Program \$643,300

City of Albuquerque
UNMH-YCHC \$161,970

Desert Peaks, Dental, LLC
Medical Physicist \$25,000

Pueblo of Zuni
Medical Direction \$48,000

Rodney McNease

Bernalillo County
Behavioral Health Services \$50,000

Gary Mlady

John F. Crisler, DDS, PA
Medical Physicist Services -
Continuation \$25,000

Lisa Quinones

City of Albuquerque
Gang Prevention \$264,910

Pilar Sanjuan

National Institute on Drug Abuse
Ecological Momentary Assessment of
Post-Traumatic Stress Disorder and
Prenatal Bonding Predicting Opioid
Use Disorder Relapse Among Pregnant
Women \$171,188

Robert Sapien

Union County General Hospital
Child Ready \$25,000

Alex Schevchuck

Union County General Hospital
Neurology, Neurosurgery and Cardiology
Services \$125,000

Mark Unruh

UNM School of Medicine,
Department of Internal Medicine
Adult Gerontology NP \$10,000

**OFFICE OF THE
VICE PRESIDENT**

Elizabeth Kocher

Miners Colfax Medical Center
Locum Tenens Services FY22 Miners
Colfax - Continuation \$25,000

Presbyterian Healthcare Services
Professional Services -
Continuation \$25,000

Richard Larson

UNM Foundation
Private Gifts for Research
(1st Qtr - FY22) \$107,756

UNM Foundation
Private Gifts for Research
(2nd Qtr - FY22) \$1,810,555

UNM Foundation
Private Gifts for Research
(3rd Qtr - FY22) \$36,420

UNM Foundation
Private Gifts for Research
(4th Qtr - FY22) \$210,655

Melissa Martinez

N.M. Department of Health
Locum Tenens Program DOH Physician,
PA and NP Services - Continuation \$83,961

N.M. Department of Health
Locum Tenens Program DOH Physician,
PA and NP Services - Non-Specific
Supplement \$53,127

A. Robb McLean

Pueblo of Sandia
Locum Tenens Services -
Continuation \$25,000

University of New Mexico Hospital
Memorandum of Agreement -
Continuation \$25,000

**Center for Infectious
Diseases & Immunity**

Terry Wu

Advanced Technology International
Mod 5- Nanolipoprotein Particle-Based
Subunit Vaccine Against Pneumonic
Tularemia - Non-Specific
Supplement \$500,000

Advanced Technology International
Mod 6 & 7 - Nanolipoprotein Particle-
based Subunit Vaccine Against Pneumonic
Tularemia - Non-Specific
Supplement \$815,715

Lawrence Livermore National
Laboratory
LLNL STNI-17-TA1-1-0042 \$120,000

Michelle Ozbun

National Institute of Allergy
and Infectious Diseases
Biology of Infectious Disease and
Inflammation - Continuation \$297,264

**Health Sciences Library
& Informatics Center**

Jonathan Eldredge

Medical Library Association
2022 Lindberg Research
Fellowship \$10,000

Melissa Rethlefsen

Oak Ridge Institute for Science and
Education
NLM Second Year Associate Fellowship
Program \$12,000

University of Utah
Southwest Community Engagement
Ambassador Project \$47,554

Center for Memory & Aging

Gary Rosenberg

National Institute on Aging
N.M. Alzheimer's Disease Research Center
- Continuation \$1,030,652





National Institute of Neurological Disorders and Stroke

Validation of Biomarkers of Small Vessel Injury in VCID \$2,441,705

University of California, Davis
Diverse VCID \$553,801

OFFICE OF RESEARCH

Richard Larson

New Mexico VA Health Care System
Veterinary Services for the N.M. Veterans Affairs Health Care System - Continuation \$32,962

New Mexico VA Health Care System
Veterinary Services for the New Mexico Veterans Affairs Health Care System - Continuation \$31,694

Larissa Myaskovsky

Dialysis Clinic, Inc.
Comparing Kidney Transplantation Outcomes in Undocumented Immigrants and U.S. Citizens \$78,656

Dialysis Clinic, Inc.
Endo ECHO Secondary Analysis for Kidney ECHO Proposal \$72,789

National Institute on Minority Health and Health Disparities
Access to Kidney Transplantation in Minority Populations - Continuation \$460,446

National Institute on Minority Health and Health Disparities
Access to Kidney Transplantation in Minority Populations - Non-Specific Supplement \$63,493

University Of Pennsylvania
Assessing the Association of Neighborhood Built Environment With CKD in the Chronic Renal Insufficiency Cohort \$74,720

University Of Pennsylvania
Assessing the Association of Neighborhood Built Environment With CKD in the Chronic Renal Insufficiency Cohort - Non-Specific Supplement \$12,000

Chloe Stoffel

New Mexico Behavioral Health Collaborative
ADOBE HSD \$622,961

New Mexico Public Education Department
ADOBE PED \$122,299

CLINICAL & TRANSLATIONAL SCIENCE CENTER

Christopher Abbott

Johns Hopkins University
Escitalopram for Agitation in Alzheimer Disease \$16,809

Justin Baca

Abbott Point of Care, Inc.
Abbott - CS-2020-0008 Clinical Evaluation of the Glucose Test in Venous and Arterial Blood \$113,588

Abbott Point of Care, Inc.
Abbott Glucose: CS-2022-0002 G3 Cap \$65,513

Abbott Point of Care, Inc.
Abbott Glucose: CS-2022-0003 CG4 Cap \$65,513

Abbott Point of Care, Inc.
Abbott Glucose: CS-2022-0004 CG8 \$65,513

Abbott Point of Care, Inc.
Abbott Pivotal I-STAT Troponin POC \$299,164

Abbott Point of Care, Inc.
Abbott Pivotal I-STAT Troponin POC - Specific Supplement \$490,242

Abbott Point of Care, Inc.
CS-2020-0013 Clinical Evaluation of the Glucose Test in Capillary Specimens Using the I-STAT G Cartridge on the I-STAT 1 Analyzer \$108,938

Autonomous Medical Devices Inc.
AMDI-AutoLab-20-02 Study, Post Vaccination \$135,664

Autonomous Medical Devices Inc.
AMDI-AutoLab-20-02 Study, Post Vaccination - Specific Supplement \$203,824

Blue Biotech
GC Covid-19 Detection \$98,186

Los Alamos National Laboratory
DTRA/LANL - The Human Breath Baseline: a Keystone for Breath Biomarker Studies \$25,359

Los Alamos National Laboratory
DTRA/LANL - the Human Breath Baseline: A Keystone for Breath Biomarker Studies - Continuation Y2 \$208,787

Mesa Photonics, LLC
A New, Simple On-Site Test for Detection of SARS Coronaviruses \$23,328

National Institutes of Health
R03 - Quantifying Heavy Metals in Interstitial Fluid for Remote Monitoring of Chronic Exposures - Continuation \$75,750

TOSOH Bioscience, Inc
TOSOH Biosciences, Inc BNP Study \$277,632

Lisa Cacari-Stone

Westat
N.M. Weave 2022-2023 \$1,400,000

Westat
WEAVE N.M. - Continuation \$693,463

Matthew Campen

National Center for Advancing Translational Sciences
HSC Clinical & Translational Science Center KL2 2020-2025 - Continuation \$394,876

Andrew Carlson

Johns Hopkins University
BEACH \$47,320

Walter Dehority

University of Arkansas
Improving COVID-19 Vaccine ISPCTN \$7,975

University of Arkansas
Move Up App Testing 3,501

University of Arkansas
MoVeUP APP (Quantitative) Study \$59,836

Los Alamos National Laboratory
The Genetic Patterns of Migration in Global Pandemics \$30,000

Los Alamos National Laboratory
The Genetic Patterns of Migration in Global Pandemics - Non-Specific Supplement \$31,651

Michelle Harkins

Vanderbilt University Medical Center
PEER (ACTIV 4d RAAS) \$51,933

Vanderbilt University Medical Center
PEER (ACTIV 4d RAAS) - Non-Specific Supplement \$1,143,760

Vanderbilt University Medical Center
PEER (ACTIV 4d RAAS) - Specific Supplement \$356,680

Vanderbilt University Medical Center
PEER (ACTIV 4d RAAS) Executive Committee - Continuation \$47,102

Alberta Kong
University of Arkansas
Protocol Chair Dr. Kong for the Obesity Study (Previously Phentermine) \$12,522

Richard Larson
Dialysis Clinic, Inc.
Kidney Pilot Project Award - 2021-2022 \$87,413

National Center for Advancing Translational Sciences
Clinical & Translational Science Center UL1 Supplement - Building Quality Assurance \$117,078

National Center for Advancing Translational Sciences
HSC Clinical & Translational Science Center UL1 2020-2025 - Continuation \$3,991,078

National Center for Advancing Translational Sciences
HSC Clinical & Translational Science Center UL1 2020-2025 - Continuation Y2 \$4,118,800

National Center for Advancing Translational Sciences
HSC Clinical & Translational Science Center UL1 2020-2025 - Deaguero Diversity Specific Supplement \$45,504

University of Nevada, Las Vegas
Institutional Development Award Program Infrastructure for Clinical and Translational Research: BERD - Specific Supplement Year 8 7/1/2021-6/30/2022 \$97,993

University of Nevada, Las Vegas
Institutional Development Award Program Infrastructure for Clinical and Translational Research: CEO - Specific Supplement Year 8 07/01/2021-06/30/2022 \$16,145

University of Nevada, Las Vegas
Institutional Development Award Program Infrastructure for Clinical and Translational Research: PDC - Specific Supplement Year 8 7/1/2021-6/30/2022 \$149,243

University of Nevada, Las Vegas
Institutional Development Award Program Infrastructure for Clinical and Translational Research: T&E - Specific Supplement \$40,352

Shuguang Leng
University of Nevada, Las Vegas
(Round 9 - MSPP) Novel Methods of Assessing Household Wood Smoke Exposure \$50,944

Jessie Maxwell
University of Arkansas
DCOC Leadership Committee - Maxwell \$43,556

University of Arkansas
Junior Pilot Studies - ISPCTN \$43,911

Hengameh Raissy
Eunice Kennedy Shriver National Institute of Child Health and Human Development
ISPCTN - UNM Pediatric Clinical Trials Center in IDeA States Pediatric Clinical Trials - Continuation \$416,580

University of Arkansas
ECHO PASC ISPCTN \$1,535,091

University of Arkansas
VDORA - Continuation \$15,150

University of Utah
PASC OTA COVID \$3,942,971

COLLEGE OF NURSING

Mary Couig
U.S. Department of Veterans Affairs
Nurses on the Frontline Caring for Patients With COVID-19: Lived Experiences (Couig-IPA) \$17,704

U.S. Department of Veterans Affairs
Nurses on the Frontline Caring for Patients With COVID-19: Lived Experiences (Lavin-IPA) \$21,628

U.S. Department of Veterans Affairs
VA Office of Nursing Services IPA - Continuation \$39,059

Judy Liesveld
Bureau of Health Professions
NSL - Baccalaureate Nursing \$200,516

Janice Martin
City of Albuquerque
Caregiver Training Program \$120,000

City of Albuquerque
Geriatric Education and Health Maintenance & HUD Expansion \$120,000

El Pueblo Health Service
El Pueblo Health Service \$87,777

Carolyn Montoya
Bureau of Health Workforce
Advanced Nursing Education Workforce Program - Continuation \$648,783

Bureau of Health Workforce
Advanced Nursing Education Workforce Program - Continuation \$641,513

California State University
California State University ANEW \$10,000

Presbyterian Healthcare Services
ANE-NPR Program - Continuation \$30,784

Katherine Zychowski Bufford
National Institute of Environmental Health Sciences
Neurovascular Consequences of Inhaled Uranium Mine-Site Dust Exposure - Continuation \$246,224

National Institute of Environmental Health Sciences
Particulate Matter-Induced Pulmonary Exosomes and the Lung-Brain Axis \$227,250

New Mexico Technical Institution
Integration of RCMD and RCS Physicochemistry and Toxicity Outcomes \$110,013

COLLEGE OF PHARMACY

Ludmila Bakhireva
FYR Diagnostics, LLC
PCR-based MiRNA Assessment of Neonatal Opioid Withdrawal Syndrome Severity \$642,446

National Institute on Alcohol Abuse & Alcoholism
ENRICH-2: Stress-Reactivity and Self-Regulation in Infants With Prenatal Alcohol Exposure - Continuation \$657,852

National Institute on Alcohol Abuse & Alcoholism
Supplement to ENRICH-2: Stress-Reactivity and Self-Regulation in Infants With Prenatal Alcohol Exposure - Specific Supplement \$69,751

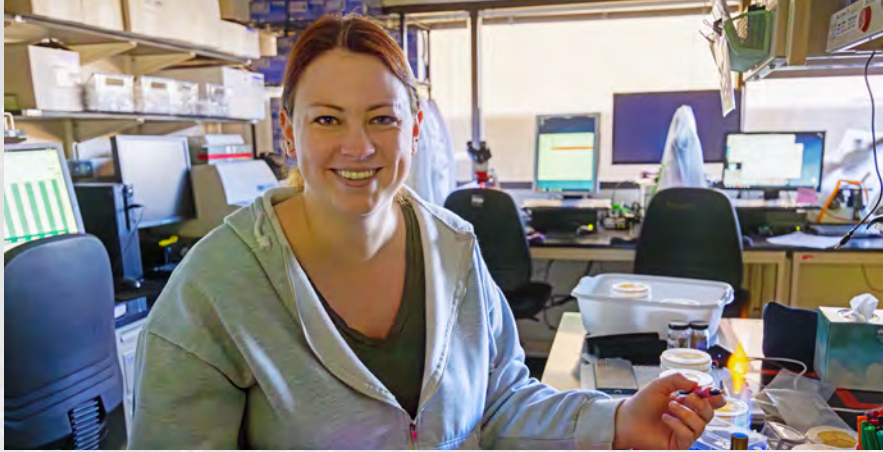
National Institutes of Health
18/24 the Healthy Brain and Child Development National Consortium \$1,011,257

University of California, San Diego
HBCD Peer Navigator \$86,200

Sarah Blossom
Arkansas Children's Research Institute
COBRE Junior Investigator Mentor - Continuation \$13,390

National Institutes of Health
Epigenetic Modulation of CD4 + T Cell Differentiation and Autoimmunity by Trichloroethylene - Non-Specific Supplement \$141,935

Matthew Campen
American Foundation for Pharmaceutical Education
AFPE Gateway Fellowship 2021-22 \$5,000



National Institute of Environmental Health Sciences
Long-Term Neurodegenerative Consequences of Air Pollution Exposure During Pregnancy \$278,468

National Institute of Environmental Health Sciences
Mechanisms of Vascular Toxicity From Inhaled Toxicants - Continuation \$324,648

National Institute of General Medical Sciences
New Mexico Center for Metals in Biology and Medicine - Specific Supplement \$762,082

National Institute of General Medical Sciences
UNM Center for Metals in Biology and Medicine - Continuation \$2,261,966

National Institutes of Health
Acceleration of Circulatory and Neurological Aging Due to Wildfire Exposures \$793,936

National Institutes of Health
New Mexico Center for Metals in Biology and Medicine - Equipment Supplement \$250,000

Melanie Dodd
 First Choice Community Healthcare
Pharmacist Consultant Agreement \$451,888

First Choice Community Healthcare
Pharmacist Consultant Agreement - Non-Specific Supplement \$93,000

First Choice Community Healthcare
Pharmacist Consultant Agreement - Non-Specific Supplement \$125,000

Esther Erdei
 National Institute of Environmental Health Sciences
CRST COVID-19 - Wayakta He \$217,464

Linda Felton
 U.S. Department of Veterans Affairs
Formulation and Batch Records \$70,028

U.S. Department of Veterans Affairs
Formulation and Batch Records Supplement \$7,053

U.S. Department of Veterans Affairs
Formulation Project for ABQ VA \$7,352

Changjian Feng
 National Institute of General Medical Sciences
Defining the Conformational Control of Nitric Oxide Synthases by a Multipronged Approach - Continuation \$314,181

National Institute of General Medical Sciences
Equipment Supplement to Defining the Conformational Control of Nitric Oxide Synthases by a Multipronged Approach \$105,024

National Institutes of Health
Defining Conformational Control of Electron Transfer in Nitric Oxide Synthases by a Multi-Pronged Method Approach - Continuation \$314,181

Bryan Grassel
 Gallup Cardiology
Radiopharmaceutical Goods & Services - Continuation \$289,100

New Mexico Oncology Hematology Consultants
Radiopharmaceutical Goods & Services \$60,000

U.S. Department of Veterans Affairs
Radiopharmaceutical Goods and Services - Continuation \$196,509

Pamela Hall
 National Institute of Allergy and Infectious Diseases
Vaccine-Mediated Control of Bacterial Virulence Regulation and Infection - Continuation \$378,750

National Institutes of Health
Developmental Exposures to Arsenic: Pneumonia, Immunity, and Microbiomes - Continuation \$604,530

Laurie Hudson
 Advanced Concepts in Biology, LLC
Anti-Tumorigenic Activities of R-ketorolac in Ovarian Cancer \$149,999

Ke Jian (Jim) Liu
 National Institute of Environmental Health Sciences
Arsenic, GATA-1 and Hematotoxicity - Continuation \$340,875

National Institutes of Health
Mutational Signatures of a Combined Environmental Exposure: Arsenic and Ultraviolet Radiation - Continuation \$508,478

University of Louisville
Chromosome Instability Drives Metal-Induced Lung Cancer \$35,952

Johnnye Lewis
 Center for Applied Environmental Law and Policy
Power Plant Regulation Work \$20,000

National Institute of Environmental Health Sciences
UNM Metal Exposure Toxicity Assessment on Tribal Lands in the Southwest Superfund Research Program - Admin Diversity Supplement \$50,000

Debra MacKenzie
 National Institute on Minority Health and Health Disparities
Center for Native American Environmental Health Equity Research - Renewal - Continuation \$1,222,878

National Institutes of Health
Center for Native American Environmental Health Equity Research - Renewal - Non-Specific Supplement \$135,880

Pavan Muttil
 American Foundation for Pharmaceutical Education
AFPE Gateway Fellowship 2021-22 \$5,000

Susan Smolinske
 American Association of Poison Control Centers
CDC WASH Project \$20,000

Denver Health and Hospital Authority
Researched Abuse, Diversion and Addiction-related Surveillance System Work Order #17 \$12,500

Health Resources and Services Administration
Poison Center Stabilization and Enhancement Program - Continuation \$137,560

New Mexico Department of Health
COVID-19 Coronavirus All Hazards Line - Specific Supplement \$517,786

COLLEGE OF POPULATION HEALTH

Lisa Cacari-Stone
 National Institute on Minority Health and Health Disparities
TREE Center - Diversity Supplement to Promote Diversity in Health-Related Research - Continuation \$72,620

National Institute on Minority Health and Health Disparities
TREE Center for Advancing Behavioral Health \$1,000,000

National Institute on Minority Health and Health Disparities
TREE Center for Advancing Behavioral Health - Continuation Yr10 \$1,376,004

Tracie Collins
 New Mexico Department of Health
N.M. DOH - Academic Health Department \$1,490,831

Rebecca Rae
 W.K. Kellogg Foundation
Tribal Data Champions Fellowship \$150,000

Pamela Sedillo
 Association for Prevention Teaching and Research
Advancing Anti-Racism in a Maternal Child Health Curriculum \$7,000

Francisco Soto Mas
 Bernalillo County
Bernalillo County Senior Services Project - Continuation \$25,000

Bernalillo County
Bernalillo County Senior Services Project - Specific Supplement \$2,688

McKinley County
McKinley County Project - Continuation \$1,908

McKinley County
McKinley County Project - Continuation \$49,370

University of Texas Health Center at Tyler
Health, Safety and Psychosocial Organic Farming Survey - Continuation \$93,948

Kristine Tollestrup
 Bernalillo County
ABC Code Book Project FY 22 \$10,000
 Tulane University
ACA- Public Health Training Centers - Continuation Yr4 \$34,440

Nina Wallerstein
 National Institute on Aging
Neighborhoods, Sexual Orientation, Race/Ethnicity & Smoking Across the Adult Lifespan: a Multilevel Intersectional Assessment - Continuation \$70,225
 New Mexico Department of Health
N.M. DOH AHD - CBPR Training Contract \$50,000

SCHOOL OF MEDICINE

Anesthesiology & Critical Care Medicine

Eugene Koshkin
 Medtronic
UNM Pain Medicine Fellowship 21-22: Medtronic \$20,000

Medtronic
UNM Pain Medicine Fellowship 22-23: Medtronic \$15,000

John Rask
 Vanderbilt University Medical Center
Simulation Multicenter Project - Continuation \$64,398

Karin Westlund-High
 Bessor Pharmaceuticals
Renalase Reduction of High Fat Pancreatitis Pain - Continuation \$25,000

National Institute of Neurological Disorders and Stroke
CCKBR-Targeting Scfv As Chronic Pain Therapy \$999,105

UNM Rainforest Innovations
HiPSC-Based High-Throughput Screening of Novel CCKBR ScFV for Treating Acute and Chronic Pain in Female Patients \$24,992

Biochemistry & Molecular Biology

Natalie Adolphi
 ABQMR
ABQMR Research Contract \$19,415

Meilian Liu
 American Heart Association
Transcriptional Regulation of Thermogenic Program - Continuation \$64,610

National Institute of Diabetes and Digestive and Kidney Diseases
Brown Fat Cellular Heterogeneity \$369,840

National Institute of Diabetes and Digestive and Kidney Diseases
The Role of Adiponectin in Regulating Type 2 Innate Lymphoid Cells and Browning of Fat - Continuation \$340,875

Mark McCormick
 American Federation for Aging Research
TRNA Synthetase AFAR Reboot \$20,000

Norn Group
TRNA Synthetases Impetus \$378,396

Vallabh Shah
 National Institute of Diabetes and Digestive and Kidney Diseases
American Indian Chronic Renal Insufficiency Cohort Study - Continuation \$670,586

National Institute on Minority Health and Health Disparities
Standing Strong in Tribal Communities: Addressing Elder Falls Disparity - Continuation \$487,355

National Institute on Minority Health and Health Disparities
Standing Strong in Tribal Communities: Addressing Elder Falls Disparity - Non-Specific Supplement \$54,152

Biomedical Research Education Program

Nancy Kanagy
 National Institute of General Medical Sciences
IMSD @ UNM HSC 2021 \$225,834

National Institute of General Medical Sciences
IMSD @ UNM HSC 2022 - Non-Specific Supplement \$2,580

Cell Biology & Physiology

Sara G.M. Piccirillo
 American Association for Cancer Research
The Impact of Tumor-Treating Fields on Residual Disease in Glioblastoma \$250,000

Nikki Jernigan
 National Heart, Lung, and Blood Institute
Vascular Smooth Muscle Function in Pulmonary Hypertension - Non-Specific Supplement \$37,875

National Institutes of Health
Vascular Smooth Muscle Function in Pulmonary Hypertension - Continuation Yr 4 \$340,875



Thomas Resta National Heart, Lung, and Blood Institute <i>Cholesterol Regulation of EGFR- Dependent Vasoconstriction in Chronic Hypoxia-Induced Pulmonary Hypertension</i>	\$37,427	Cynthia Blair National Cancer Institute <i>Improving Physical Functioning in Older Cancer Survivors Through Light-Intensity Physical Activity - Continuation</i>	\$154,279	Neda Hashemi New Mexico Cancer Care Alliance <i>Clinical Trial Phase 3</i>	\$181,535
National Institutes of Health <i>Minority Institutional Research Training Program (T32) - Continuation</i>	\$372,395	Ursa Brown-Glaberman New Mexico Cancer Care Alliance <i>Clinical Trial Phase 1b/2</i>	\$120,040	Kimberly Leslie Defense Health Program <i>Converting Mutant P53 Into an Actionable Target for the Treatment of Ovarian Cancer</i>	\$444,473
National Heart, Lung, and Blood Institute <i>Cholesterol Regulation of EGFR- Dependent Vasoconstriction in Chronic Hypoxia-Induced Pulmonary Hypertension - Non-Specific Supplement</i>	\$716	New Mexico Cancer Care Alliance <i>Clinical Trial Phase 2</i>	\$181,855	National Cancer Institute <i>Targeted Therapy for Endometrial Cancer</i>	\$115,525
Comprehensive Cancer Center		New Mexico Cancer Care Alliance <i>Clinical Trial Phase 2/3</i>	\$187,935	National Cancer Institute <i>Targeted Therapy for Endometrial Cancer</i>	\$279,805
Sarah Adams National Cancer Institute <i>Mechanisms of Selective Therapeutic Synergy of PARP-Inhibition and CTLA4 Blockade Engaged by Interferon-gamma in the Ovarian Tumor Microenvironment</i>	\$314,982	New Mexico Cancer Care Alliance <i>Clinical Trial Phase 3</i>	\$116,840	Li Luo Colorado School of Public Health <i>A Population-Based Study of Ketorolac and Ovarian Cancer Survival</i>	\$71,967
National Cancer Institute <i>Mechanisms of Selective Therapeutic Synergy of PARP-Inhibition and CTLA4 Blockade Engaged by Interferon-gamma in the Ovarian Tumor MicroEnvironment - Non-Specific Supplement</i>	\$34,999	Zoneddy Dayao Alliance NCTN Foundation <i>Alliance NCTN Foundation Federal Funds</i>	\$127,770	Dario Marchetti National Cancer Institute <i>Functional Characterization of Brain- Colonizing Breast Cancer CTC Subsets</i>	\$326,787
Prajakta Adsul NRG Oncology <i>Exploring the Implementation Context of Community Oncology Practices for Lifestyle Interventions - Continuation</i>	\$15,379	Alliance NCTN Foundation <i>Alliance NCTN Foundation Non-federal Funds</i>	\$127,770	National Cancer Institute <i>Mechanisms of Melanoma Brain Metastasis by CTCs Isolated From Patients' Blood</i>	\$329,725
Leslie Andritsos New Mexico Cancer Care Alliance <i>Clinical Trial Phase 1b/3</i>	\$115,560	American Cancer Society <i>Lodging Plan for UNM Comprehensive Cancer Center-2022/2023</i>	\$25,000	National Cancer Institute <i>Mechanisms of Melanoma Brain Metastasis by CTCs Isolated From Patients' Blood - Non-Specific Supplement</i>	\$29,310
New Mexico Cancer Care Alliance <i>Clinical Trial Phase 3</i>	\$102,835	American Cancer Society <i>Transportation Plan for UNM Comprehensive Cancer Center- 2022/2023</i>	\$10,000	Oxnard Foundation <i>Mechanisms of CTC Plasticity in Melanoma Brain Metastasis</i>	\$59,664
Eric Bartee National Cancer Institute <i>Impact of Extracellular Potassium on Oncolytic Therapy</i>	\$177,066	New Mexico Department of Health <i>Development and Delivery of Cancer Survivorship Cancer Plans</i>	\$34,422	Colleen McCormick New Mexico Cancer Care Alliance <i>Clinical Trial Phase n/a</i>	\$181,215
Marianne Berwick National Cancer Institute <i>Integration of Clinical and Molecular Biomarkers for Melanoma Survival</i>	\$1,987,168	New Mexico Department of Health <i>Development and Delivery of Cancer Survivorship Cancer Plans</i>	\$10,000	Jean McDougall Wake Forest University <i>Food Insecurity in Oncology (FIOnc)</i>	\$26,540
National Cancer Institute <i>Integration of Clinical and Molecular Biomarkers for Melanoma Survival</i>	\$598,220	Ala Ebaid New Mexico Cancer Care Alliance <i>Clinical Trial Phase 1/2</i>	\$187,615	Shiraz Mishra National Cancer Institute <i>Cancer Research - Scholarship and Training Experiences in Population Sciences</i>	\$146,654
University of North Carolina <i>Identification of Lethal Melanomas at the Time of Diagnosis (Resub)</i>	\$63,288	New Mexico Cancer Care Alliance <i>Clinical Trial Phase 2</i>	\$190,815	National Institutes of Health <i>Enhancing Prevention Pathways Towards Tribal Colorectal Health</i>	\$197,118
		Dolores Guest Consulate of Mexico in <i>Albuquerque</i> <i>Ventanilla De Salud 2021</i>	\$36,939	Carolyn Muller National Cancer Institute <i>NCORP - Continuation</i>	\$1,651,700
		Yan Guo Indiana University <i>The Role of LMO2 in the Pathogenesis of T-Cell Leukemia</i>	\$10,049	New Mexico Cancer Care Alliance <i>Clinical Trial Phase 2</i>	\$116,840
		Richard Harvey Public Health Institute <i>Phase 3 Randomized Trial of Inotuzumab Ozogamicin for Newly Diagnosed High-Risk B-ALL; Risk-Adapted Post- Induction Therapy for High-Risk B-ALL, Mixed Phenotype Acute Leukemia and Disseminated B-Lly (1732 Study)</i>	\$239,993		

Jacklyn Nemunaitis
New Mexico Cancer Care Alliance
Clinical Trial Phase 3 \$116,840

Scott Ness
National Institutes of Health
Mutations and Target Genes in Adenoid Cystic Carcinoma \$359,813

Michelle Ozbun
American Cancer Society
American Cancer Society Institutional Research Grant - Diversity in Cancer Research Internship Grant Supplement \$22,000

American Cancer Society
Institutional Research Grant \$270,000

American Cancer Society
Institutional Research Grant - Non-Specific Supplement \$120,000

Sarah Popok
University Of Pennsylvania
Supportive Clinical Trial \$2,000

Eric Prossnitz
National Cancer Institute
G Protein-Coupled Estrogen Receptor and Breast Carcinogenesis \$353,942

Rita Serda
Oxnard Foundation
Biomaterialized Zombie Cancer Cells for Immunotherapy \$180,000

Mara Steinkamp
Leidos, Inc
BASE Project/MGMT: NCI Experimental Therapeutics (NExT) Chemical Biology Consortium (CBC) - Continuation \$33,253

Andrew Sussman
University of Arizona
Ethnicity and Lung Cancer Survival: a Test of the Hispanic Sociocultural Hypothesis \$45,821

Bernard Tawfik
New Mexico Cancer Care Alliance
Clinical Trial Phase 3 \$178,335

New Mexico Cancer Care Alliance
Clinical Trial Phase 3 \$184,415

New Mexico Cancer Care Alliance
TAPUR \$84,840

Alan Tomkinson
Lawrence Berkeley National Laboratory
Structural Cell Biology & Physiology of DNA Repair Machines Project \$68,175

Lovelace Biomedical & Environmental Research Institute
DNA Repair Capacity Assays for Lung Disease Risk Assessment \$29,396

National Cancer Institute
CCSG: Administrative Supplement to Strengthen NCI-Supported Community Outreach Capacity Through Community Health Educators of the National Outreach Network \$114,999

National Cancer Institute
CCSG: Administrative Supplement to Strengthen the Research, Training and Outreach Capacity of the Geographic Management of Cancer Health Disparities Program \$249,999

National Cancer Institute
Dissemination of a Colorectal Cancer Screening Program Across American Indian Communities in the Southern Plains and Southwest United States \$1,000,000

National Cancer Institute
Research Partnership to Address Social Needs in Cancer Care \$199,933

National Cancer Institute
University of New Mexico Cancer Center Support Grant \$2,307,793

National Institute of General Medical Sciences
Cellular Functions of Eukaryotic DNA Ligases \$369,502

Charles Wiggins
National Cancer Institute
Surveillance Epidemiology and End Results Program - Continuation \$2,745,173

New Mexico Department of Health
DOH BCC Surveillance & Cancer Survivorship Care Plans Project \$15,090

Dental Medicine

Gary Cuttrel
HRSA/HIV-AIDS Bureau
Dental Partnership Program, HRSA Ryan White Part F - Continuation \$285,682

New Mexico Higher Education Department
Train Dentists to Treat Pediatric and Developmentally Delayed Patients \$900,000

Dermatology

Emily Altman
Parexel International
HS0005-Be Heard \$86,433

John Durkin
Celldex Therapeutics
CDX-0159 \$99,167

Celldex Therapeutics
CDX-0159 - Specific Supplement \$57,076

NeraCare
MG-III-001-MELAGENIX \$41,379

ECHO Institute

Sanjeev Arora
Assistant Secretary for Preparedness and Response
ECHO ASPR COVID-19 Clinical Rounds Program - Continuation \$499,999

Association of State and Territorial Health Officials
Enhancing Community-level Rapid Response to Pain and Opioid Emergencies \$400,000

Bureau of Health Workforce
Creating Cultures of Resiliency for Behavioral Health Providers Through Project ECHO \$1,079,333



CDC Foundation
 COVID-19: Advanced HIV Disease
 in the Context of COVID-19 Virtual
 Training Series - Continuation \$10,000

Clinton Health Access Initiative
 ECHO Support for Global Webinars
 to Improve HIV Care in the COVID-19
 Era - Continuation (AHD-3) \$23,000

Clinton Health Access Initiative
 Enhancing Access to COVID-19 Care
 in Latin America and the Caribbean
 Using Project ECHO \$600,000

ECMC Foundation
 College and Career Counseling
 ECHO Program \$250,000

Elizabeth Glaser Pediatric
 AIDS Foundation
 EGPAF Infection Prevention Control
 (TO4) - Specific Supplement \$22,375

Elizabeth Glaser Pediatric
 AIDS Foundation
 EGPAF TO5 5 Cholera Sessions \$29,126

Elizabeth Glaser Pediatric
 AIDS Foundation
 EGPAF TO5 5 Cholera Sessions -
 Continuation \$5,825

Family Health Centers
 of San Diego
 FHCS Partnership w/ ECHO
 to Improve Clinical and Public
 Health Outcomes \$1,200,000

FHI 360
 Technical Assistance to the Provincial
 Health Offices in Zambia to Support
 Optimized HIV Case Finding, Treatment,
 and HIV Epidemic Control Under the
 President's Emergency Plan for
 AIDS Relief \$37,500

Foundation for Opioid
 Response Efforts
 Training School- and Community-Based
 Providers to Prevent and Manage Pain,
 Trauma and Opioid Abuse for
 New Mexico's Youth \$1,500,000

Health Resources and
 Services Administration
 SC AETC - End HIV Epidemic
 Specific Supplement Year 3 \$98,765

Health Resources and
 Services Administration
 South Central AIDS Education
 and Training Center Program -
 Continuation Yr. 4 \$3,833,717

Jhpiego Corporation
 ECHO Support for Building Health
 Worker Capacity Through the Urban
 Health Initiative Program in Afghanistan -
 Continuation \$23,936

Jhpiego Corporation
 Jhpiego Guatemala Health and Nutrition -
 Year 1 \$25,000



Jhpiego Corporation
 Jhpiego Guatemala Health
 and Nutrition - Yr 2 \$250,000

Jhpiego Corporation
 Jhpiego Healthcare Workforce -
 Continuation Y5 \$45,000

Johnson & Johnson
 Improving Perinatal Health in Rural
 and Underserved Communities
 Throughout New Mexico, Arizona
 and Texas \$500,000

Los Alamos National
 Laboratory Foundation
 ECHO for Social Emotional
 Learning \$40,000

Medscape
 Medscape Vaccine Initiative \$22,500

Medscape
 Medscape Vaccine Initiative -
 Non-Specific Supplement \$5,000

N.M. Early Childhood Education
 and Care Department
 COVID-19 ECHO Collaboration
 on Early Childhood \$2,000,000

Navajo Area Indian Health Service
 Epidemiology ECHO Program
 for Navajo Area IHS \$45,000

New Mexico Corrections
 Department
 N.M. Department of Corrections
 Hepatitis C - Continuation \$690,644

New Mexico Corrections
 Department
 Re-Entry ECHO Program:
 Supporting PEP Graduates
 As Peer Support Workers \$365,000

New Mexico Department of Health
 Climate Change
 and Human Health \$100,000

New Mexico Department of Health
 COVID-19 N.M. Peer
 Education Project \$498,488

New Mexico Public Education
 Department
 Project ECHO - N.M. PED Social
 Emotional Learning 2022 \$75,000

New Venture Fund
 Co-Impact Organizational
 Strengthening Grant for India,
 Africa, and U.S. \$3,000,000

New Venture Fund
 ECHO/Co-Impact Partnership for
 Achieving Global Scale -
 Continuation \$1,968,495

Northwest Portland Area Indian
 Health Board
 Indian Health Services TeleECHO
 Clinic Support - Continuation \$200,000

Office of Rural Health Policy
 Expanding Access to Care for
 Long-Haul COVID Patients in
 Rural New Mexico \$475,000

Pfizer, Inc.
 Leveraging Project ECHO Partnerships
 for Access to Hematology Oncology Best
 Practices in Rural and Underserved
 Areas \$900,000

Pfizer, Inc.
 Project ECHO-Pfizer Planning Partnership
 for Global Health Equity \$584,500

Southcentral Foundation
 ECHO Support for Native American Rural
 Emergency Medical Program \$45,000

Stanford University
 Stanford University T1d Support and
 Technical Assistance -
 Continuation \$42,901

U.S. Air Force in Europe - Air
 Forces Africa
 ECHO APORA 2021 Conference
 Support \$17,402

UBS Optimus Foundation
 Empowering Sub-Saharan Africa to
 Improve Vaccine Confidence Using
 Project ECHO \$355,095

University of California, Davis
 ECHO Support for Multinational Health
 Education Networks in Africa and
 Southeast Asia - Continuation Y3 \$85,599

University of California, Davis
 ECHO Support for Multinational Health
 Education Networks in Africa and
 Southeast Asia - Non-Specific
 Supplement \$41,627

University of California, San Francisco
UCSF/CDC Consortium in MENA Regions \$100,000

W.K. Kellogg Foundation
Education ECHO for Grades 3 Thru 5 Literacy Program in New Mexico \$1,050,000

World Health Organization
15 Session Covax Extension \$24,268

World Health Organization
Annual World Patient Safety Day Conference \$13,265

World Health Organization
ECHO Partnership With the World Health Organization for Infection Prevention and Control Webinar Series - Continuation \$5,869

World Health Organization
ECHO Partnership With the World Health Organization for Infection Prevention and Control Webinar Series - Continuation \$19,127

World Health Organization
ECHO Support for Five Infection Prevention and Control Webinars \$23,249

World Health Organization
HIVDR Webinar \$2,300

World Health Organization
Improving the Quality of HIV Care Services: a Glance at Quality Assurance and Quality Improvement Practices Using Project ECHO \$4,500

World Health Organization
WHO CNO ECHO Community of Practice \$3,912

World Health Organization
WHO Cpie Mini Series Collaboration \$16,288

World Health Organization
WHO HQ Antimicrobial Resistance Webinar Series \$22,389

World Health Organization
WHO Learning Collective in COVID-19 Vaccine Delivery Partnership \$12,943

World Health Organization
WHO Nursing and Midwifery Webinars \$8,336

World Health Organization
WHO Patient Safety 2022 Virtual Policy Makers Forum \$23,998

World Health Organization
WHO Patient Safety Medication Safety Webinar Series \$4,347

World Health Organization
WHO PHL Webinar Series \$21,113

World Health Organization
World Antibiotic Awareness Week \$4,478

Emergency Medicine

Laura Banks
New Mexico Department of Health
DOH Partners in Preparedness Conference \$120,000

New Mexico Transportation Department
Pedestrian Safety Initiative 21-22 \$300,000

Whitney Barrett
Valencia Regional Emergency Communication Center
Professional Services - Continuation \$18,000

Darren Braude
City of Rio Rancho
Professional Services - Non-Compete Continuation \$5,000

New Mexico Department of Public Safety
Tactical Emergency Medical Services - Air Medical \$118,994

Quick Draw
Medical Directorship - Continuation \$880

Cameron Crandall
Yale University
CTN-0099: Emergency Department-Initiated Buprenorphine Validation Network (ED-INNOVATION) Trial - Continuation \$314,848

Yale University
CTN-0099: Emergency Department-Initiated Buprenorphine Validation Network Trial - Non-Specific Supplement \$80,492

Joy Crook
New Mexico Department of Health
FY 22 N.M. DOH Statewide EMS - Continuation \$50,000

U.S. Department of the Air Force
Kirtland AFB Medical Direction \$15,000

U.S. National Parks Service
Zion National Park ALS Refresher \$4,480

Christian Garcia
Town of Red River
EMS Medical Director Services \$12,000

Andrew Harrell
Boeing Company
Physician Services - Continuation \$75,000

New Mexico Department of Public Safety
Medical Direction - Continuation \$91,667

New Mexico Public Safety Department
Professional Services TEMS - Continuation \$232,000

Jon Kenneth Femling
Olive View Medical Center-UCLA
IDnet Synovial Fluid Study \$8,750

Michael Lauria
Stryker/NAEMSP
NAEMSP®-Stryker EMS Medicine Fellowship \$80,000

Steven McLaughlin
Live Nation Worldwide, Inc.
Paramedics/EMT Services - Continuation \$25,000

State of New Mexico
EMT Training- Cohort 3 - Continuation \$90,734

Kimberly Pruett
City of Albuquerque
Medical Directorship - Continuation \$263,480

Taos County
Medical Directorship - Continuation \$36,000

Village of Angel Fire
Medical Directorship - Continuation \$18,000

Aaron Reilly
High Altitude Athletics Club
Medical Director Services - Continuation \$2,500

Sandia Crest Marathon
Medical Oversight \$1,550

Robert Sapien
Maternal and Child Health Bureau
N.M. EMS for Children Program - Continuation Year 5 \$50,219

Northern Navajo Medical Center
Northern Navajo Medical Center Child Ready Consultation \$11,000

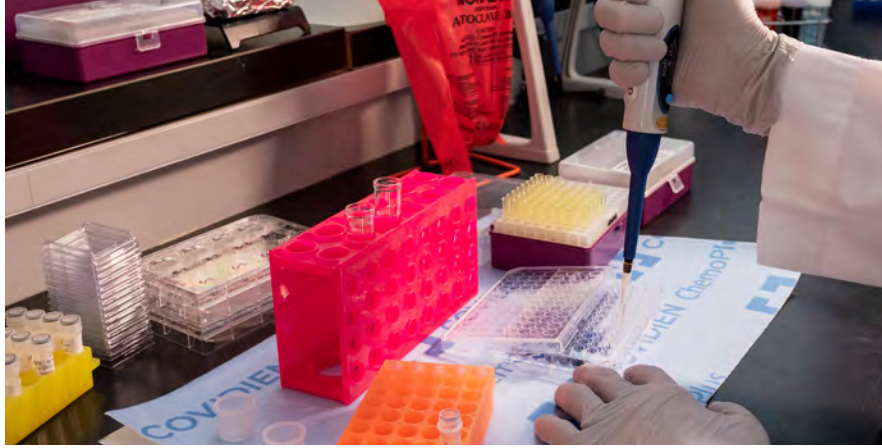
Office for the Advancement of Telehealth
Child Ready Rural Emergency Support of Trauma - Continuation \$300,000

Philip Seidenberg
Abbott Laboratories Inc.
Abbott LANER-HF BNP Study \$775,759

Janet Veasart
National Board of Medical Examiners
National Board of Medical Examiners OSC Exam Agreement \$75,000

Brandon Warrick
Pax Resource Consulting
PAX Resource Consulting \$2,700

U.S. Department of Justice
U.S. Attorney Expert Witness - Warrick-Taylor, et al., v. USA \$12,191



U.S. Department of Justice
U.S. Attorney, District of N.M. - Expert
Witness \$16,159

Chelsea White
Cibola County
Medical Directorship -
Continuation \$12,000

Isleta Health Center
Medical Director Services-
Continuation \$84,000

Pueblo of Acoma EMS
Medical Direction for the
Pueblo of Acoma 2 \$36,000

Pueblo of Laguna
Laguna Pueblo Medical Direction -
Continuation 2 \$80,000

Pueblo of Laguna Fire Protection
Program
Medical Director for the Pueblo of Laguna
Fire Protection Program w/ BAA -
Continuation \$80,000

Ramah Navajo School Board, Inc,
dba Pine Hill Health Center
Medical Direction for the Ramah Navajo
School Board - Continuation 2 \$45,000

Jenna White
Bernalillo County
Medical Directorship -
Continuation \$14,000

Presbyterian Medical Services
Medical Director Services -
Continuation \$23,760

Pueblo of Jemez
FY22 Pueblo of Jemez Medical Direction -
Continuation 3 \$24,000

Sandoval County
Medical Director Services -
Continuation \$54,000

Sandoval County Regional
Emergency Communications
Center
Medical Director Services -
Continuation \$14,184

Town of Cochiti Lake
Medical Director Services -
Continuation \$7,500

Village of Cuba
Medical Directorship - Continuation \$4,100

Village of Tijeras
Medical Directorship -
Continuation \$3,600

Family & Community Medicine

Venice Ceballos
City of Albuquerque
Emergency Rental Assistance
Program \$250,000

Arthur Kaufman
Bernalillo County
Tiny Home Village Community Support
Services \$105,322

Bernalillo County
Tiny Home Village Community Support
Services - Continuation \$455,000

City of Albuquerque
Emergency Rental Assistance Program -
Specific Supplement \$43,832

City of Albuquerque
Interagency Intensive Case Management
System to Decrease Substance Abuse in
Albuquerque \$750,000

City of Albuquerque
Med Site Manager Services \$13,295

City of Albuquerque
UNM-OCH Case Navigation at Wellness-
2 Hotel \$647,143

New Mexico Department of Health
Vaccine Health Equity Project -
COVID-19 \$4,471,537

Office of the Assistant Secretary
for Health
Increasing EITC in New Mexico -
Continuation YR3 \$450,000

Presbyterian Healthcare Services
Presbyterian Healthcare Contract for
Services CMS FY22 \$170,063

W.K. Kellogg Foundation
Social Needs Navigation: a Household
Empowerment Model \$1,000,000

Sarah Lathrop
New Mexico Department of Health
FY 22 N.M. Emerging Infections Program -
Continuation \$52,750

New Mexico Department of Health
FY 22 N.M. Emerging Infections Program -
Specific Supplement \$768,866

Lawrence Leeman
Eunice Kennedy Shriver National
Institute of Child Health and
Human Development
HEAL Initiative: UNM HSC Clinical
Center \$445,388

Janet Page-Reeves
City of Albuquerque
Health Literacy - COVID-19 \$1,686,082

Nancy Pandhi
U.S. Department of Veterans Affairs
Gulf War Code Book, Module
Development, Recruitment -
Continuation \$8,400

Tassy Parker
International Association for
Indigenous Aging
A Collaborative Approach to the Healthy
Brain Initiative's Road Map for Indian
Country: Honoring Sovereignty, Culture,
Diversity, and Tradition - Non-Specific
Supplement \$2,000

University of Colorado Denver
Collaborative Hubs to Reduce the Burden
of Suicide Among AI & AN Youth -
Continuation Year 5 \$120,520

University of Colorado Denver
Center for American Indian and Alaska
Native Diabetes Translation
Research \$27,270

University of Colorado Health
Sciences Center
Center for American Indian and Alaska
Native Health Disparities - FY22 \$31,815

Washington State University
Community Organizations for Natives:
COVID-19 Epidemiology, Research, Testing,
and Services - Specific
Supplement \$22,439

Washington State University
NEAR WSU P01 \$53,025

Katharine Rebolledo
Presbyterian Medical Services
Physician Services - Continuation \$25,000

Valerie Romero-Leggott
Bureau of Health Workforce
National HCOP Academies - Continuation
YR4 \$639,703

Pilar Sanjuan
National Institute of Mental Health
Examining the Interplay Between Resting
Oscillations, Novelty Processing and
Attention in PTSD \$98,466

National Institute of Mental Health
SUPPLEMENT Examining the Interplay
Between Resting Oscillations, Novelty
Processing, and Attention in PTSD -
Specific Supplement \$164,139



National Institute on Alcohol Abuse & Alcoholism

Neural Underpinnings of Emotion Regulation and Drinking to Cope Among Problem Alcohol Drinkers \$149,029

National Institute on Alcohol Abuse & Alcoholism

Neural Underpinnings of Emotion Regulation and Drinking to Cope Among Problem Alcohol Drinkers - Non-Specific Supplement \$170,248

National Institute on Alcohol Abuse & Alcoholism

Neural Underpinnings of Emotion Regulation and Drinking to Cope Among Problem Alcohol Drinkers - Specific Supplement \$107,245

The Task Force for Global Health
MAT-LINK Surveillance Project \$348,000

Robert Sapien

Guadalupe County Hospital
Child Ready \$25,000

Lovelace Regional Hospital-Roswell
Child Ready Services \$25,000

Helene Silverblatt

Bureau of Health Workforce
Area Health Education Centers Program - Continuation \$444,000

Center for Health Innovation
CHI Contract for Services FY22 \$5,000

Daniel Waldman

First Choice Community Healthcare
Consulting Services \$48,620

Daniel Williams

University of Mississippi Medical Center
Promoting Resilience and Mental Health Among Health Professional Workforce \$106,676

Laura Wylie

Bureau of Health Workforce
Physician Assistant Training in Primary Care - Continuation \$300,000

Internal Medicine

Christos Argyropoulos

Anonymous Non-Profit Foundation
Medical Directorship - Evergreen - FY22 \$1,249,620

Dialysis Clinic, Inc.
Kidney: To Take or Not to Take? - FY22 \$209,980

Novo Nordisk, Inc.
Clinical Trial Phase 3: EX6018-4758 Zeus \$172,854

Soraya Arzhan

Dialysis Clinic, Inc.
Implications of Hypernatremia in Hospitalized Patients Without and With Chronic Kidney Disease - Y3 \$329,456

Nour Ass'ad

United Therapeutics Corporation
Phase 3 Study of the Efficacy and Safety of Inhaled Treprostinil in Subjects With Idiopathic Pulmonary Fibrosis" \$27,168

Sara Assaf

Duke University
Facilitators and Barriers for COVID-19 Testing Uptake and Its Impact on Vaccine Uptake \$302,991

GlaxoSmithKline
Clinical Trial - Phase 3 GSK3511294 \$236,568

Aleksandr Birg

Lovelace Biomedical & Environmental Research Institute
Cognitive Sequelae of Cerebrovascular and Gut Dysfunction Following COVID-19 \$7,808

James Blankenship

Zoll TherOx
AMIHOTT III Study \$102,434

Cristian Bologa

Givaudan Flavors Corporation
Givaudan Research Agreement- Y13 \$205,000

Steven Bradfute

Albert Einstein College of Medicine
Prometheus: A Platform for Rapid Development of Immunotherapeutics and Immunoprophylactics Against Emerging Viral Threats - Y4 \$310,000

Steven Bradfute

Defense Threat Reduction Agency
Long Non-Coding RNAs in Venezuelan Equine Encephalitis Virus Infection - Y2 \$335,749

Mesa Photonics, LLC
Novel Approaches for Detection of and Protection From Emerging Viral Pandemics \$9,682

Marcos Burgos

New Mexico Department of Health
Tuberculosis Medical Care, Consultation and Education Services - FY22 \$130,367

Osman Dokmeci

AbbVie
M18-891:a Phase 3 Randomized, Placebo-Controlled, Double-Blind Study to Evaluate Upadacitinib in Adolescent and Adult Subjects With Moderate to Severe Atopic Dermatitis - Supplement 3 \$161,093

Jeremy Edwards

National Institutes of Health
Knowledge Management Center for Illuminating the Druggable Genome - Y5 \$1,000,000

Deirdre Hill

National Cancer Institute
Chronic Kidney Disease Development in Cancer Treatment and Survival \$389,545

Ivy Hurwitz

UNM Rainforest Innovations
Spray Drying of Essential Oil-Based Larvicides \$25,000

Michelle Iandiorio

Bureau of Health Workforce
Community-based Workforce to Increase COVID-19 Vaccine Access for Vulnerable Populations in New Mexico \$942,470

Health Resources and Services Administration
Ryan White Part C EIS \$181,263

Health Resources and Services Administration
Ryan White Part C EIS - Non-Specific Supplement \$537,927

HIV-AIDS Bureau
Ryan White HIV/AIDS Program Part D Coordinated HIV Services and Access to Research for Women, Infants, Children, and Youth - FY22 \$492,914

Merck, Sharp & Dohme, Inc. <i>Clinical Trial Phase 2a: MK-8591</i>	\$1,510,115	InsMed Incorporated <i>Clinical Trial Phase 2b - INS1009-202</i>	\$140,335	National Institute on Drug Abuse <i>New Mexico Clinical Trials Node: Clinical Research and Practice to Address Substance Use in Diverse, Rural and Underserved Populations - Supplement 2&3</i>	\$1,936,681
New Mexico Department of Health <i>DOH HIV Provider Agreement</i>	\$1,260,000	Labcorp Drug Development, Inc <i>Clinical Trial Phase 2: GB002-2102</i>	\$163,840	National Institute on Drug Abuse <i>Truman Health Services CTN-0116 - Y22-23 - Supplement #1</i>	\$358,473
Ashish Kataria Plexision Inc. <i>Validating Cell-Based Assays for ABMR After Renal Transplantation</i>	\$22,500	PPD Investigator Services <i>Clinical Trial Phase 3: PBI L606p3</i>	\$111,000	New York University Grossman School of Medicine <i>CTN-0100: Optimizing Retention, Duration and Discontinuation Strategies for Opioid Use Disorder Pharmacotherapy</i>	\$452,846
Denece Kesler Bureau of Health Workforce <i>Preventive Medicine Residency Program - Y5</i>	\$199,999	Respira Therapeutics, Inc <i>Clinical Trial Phase 2: RT234-PAH-CL202 (Respira)</i>	\$155,855	The RAND Corporation <i>Improving Access and Treatment for Co-Occurring Opioid Use Disorders and Mental Illness Disorders - Y3</i>	\$688,939
Johns Hopkins University <i>Development of a Medical Screening Program for Former LANL & Sandia Workers - Y2</i>	\$5,000	United Therapeutics Corporation <i>Clinical Trial Phase 3: ADVANCE Capacity (ROR-PH-302)</i>	\$108,800	University of Nevada at Reno <i>A Multi-Site Mixed Methods Study of Methamphetamine Use in the Mountain West</i>	\$178,741
Office of Rural Health Policy <i>Radiation Exposure Screening and Education Program - Y2</i>	\$223,956	University Of Pennsylvania <i>Case-Control Study of Methamphetamine in Pulmonary Arterial Hypertension</i>	\$19,644	Swathi Paleti Takeda Pharmaceutical Company Ltd. <i>Clinical Trial Phase 4 COMPASS-CD</i>	\$834,200
Olga Kovbasnjuk Baylor College of Medicine <i>Intestinal Niche in Homeostasis and Epithelial Regeneration - Y3</i>	\$45,450	Nestor Mercado Phillips Image Guide Therapy Corporation <i>Clinical Trial: DEFINE GPS</i>	\$225,820	Gulshan Parasher DURECT Corporation <i>Clinical Trial Phase 2-b: Durect C928-011</i>	\$112,175
Mark Lacy IDSA Foundation <i>Infectious Diseases Student Interest Groups Program</i>	\$500	Gregory Mertz Fred Hutchinson Cancer Research Center <i>Clinical Trial Phase 3: CoVPN 3006-COVID- Protocol Reimbursement</i>	\$814,070	Douglas Perkins Harvard School of Public Health <i>Fogarty Global Health Training Fellowship Program - FY22</i>	\$14,283
Christophe Lambert National Institutes of Health <i>IDG Data Coordinating Center - Engagement Plan With the CFDE</i>	\$745,261	Fred Hutchinson Cancer Research Center <i>Clinical Trial Phase 3: CoVPN 3006-COVID- Protocol Reimbursement - Non-Specific Supplement</i>	\$246,869	John E. Fogarty International Center for Advanced Study in the Health Sciences <i>Training and Research on Severe Malarial Anemia - Renewal 23</i>	\$282,334
Lana Melendres-Groves Acceleron Pharma Inc. <i>Clinical Trial Phase 3: A011-14 (ZENITH)</i>	\$227,647	Fred Hutchinson Cancer Research Center <i>Clinical Trial Phase 3: CoVPN 3006-COVID- Startup/ Site Prep</i>	\$90,900	National Institute of Allergy and Infectious Diseases <i>COVID: Temporal Transcriptomics in Hospitalized COVID-19 Patients From Disparately Impacted Ancestral Groups for Therapeutic Discovery</i>	\$751,987
Acceleron Pharma Inc. <i>Clinical Trial Phase 3: Protocol A011-12 (SOTERIA)</i>	\$307,787	Tudor Oprea The Jackson Laboratory <i>Illuminating the Druggable Genome by Knowledge Graphs</i>	\$118,605	National Institute of Allergy and Infectious Diseases <i>Defining the Inflammation and Immunity Transcriptome in Severe Malarial Anemia for Immunotherapeutic Discovery - Y5</i>	\$703,880
Acceleron Pharma Inc. <i>Clinical Trial Phase 3: STELLAR (A011-11)</i>	\$255,360	Kimberly Page Cedars-Sinai Medical Center <i>Collaborative Care Teams for Hospitalized Patients With Opioid Use Disorders: Translating Evidence Into Practice - FY22</i>	\$330,584	Natalie Salas New Mexico Department of Health <i>Provide Expert STD Clinical Services, Consultation, Provider Training and Program Planning.</i>	\$68,946
Actelion Clinical Research, Inc. <i>Protocol AC-065A402: Upravi (Selexipag): The Users Drug Registry - Non-Specific Supplement</i>	\$33,780	Loyola University Chicago <i>Computational Modeling for HCV Vaccine Trial Design and Optimal Vaccine-based Combination Intervention</i>	\$54,813		
Actelion Pharmaceuticals Ltd. <i>CARE PAH</i>	\$129,935	National Institute on Drug Abuse <i>EXPLORE CTN-0133 - Supplement 02</i>	\$206,608		
Actelion Pharmaceuticals Ltd. <i>Clinical Trial Phase 3: 67896062CTP3001-maciteph</i>	\$224,217	National Institute on Drug Abuse <i>Exploring Health Beliefs for Community Engagement and Diversity in Clinical Trials - Supplement</i>	\$220,751		
Aerovate Therapeutics, Inc <i>Clinical Trial Phase 2b/3: (IMPAHCT)</i>	\$284,771				
Bayer HealthCare Pharmaceuticals Inc.	\$128,975				

David Schade

Case Western Reserve University
Epidemiology of Diabetes Intervention and Complications - FY22 \$124,018

Case Western Reserve University
Epidemiology of Diabetes Intervention and Complications - FY22 - A1 \$25,811

Case Western Reserve University
UroEDIC Bladder: Bladder Dysfunction in Type 1 Diabetes \$7,685

George Washington University
Glycemia Reduction Approaches in Diabetes: a Comparative Effectiveness Study - Year 10 \$26,596

Darren Schmidt

Bayer HealthCare Pharmaceuticals Inc.
Clinical Trial Phase 3: Efficacy and Safety of BAY 94-8862 / Finerenone \$537,536

Namita Singh

Alexion Pharmaceuticals, Inc.
Clinical Trial Phase 2: ALXN2050-NEPH-201 \$154,137

Novartis Pharmaceuticals Corporation
CLINICAL TRIAL PHASE 3: LNPO23F12301 \$131,804

Manoocher Soleimani

DCI Donor Services
The Role of Extracellular Vesicles in Kidney Cystogenesis in Tuberous Sclerosis Complex \$309,211

Harvard Medical School
Wood Smoke and Chronic Mucous Secretion - FY22 \$45,450

U.S. Department of Veterans Affairs
IPA - Barone - Y3 \$47,596

U.S. Department of Veterans Affairs
IPA - Zahedi - Y3 \$52,500

Veteran Affairs Medical Center
IPA - Brooks - Y2 \$7,118

Akshay Sood

Miners Colfax Medical Center
A Novel Comprehensive Medical Outreach Program for Rural Miners in Mountain West United States \$147,831

Miners Colfax Medical Center
Medical Consultation and Care - FY22 \$1,057,733

National Institute of General Medical Sciences
COVID: Keeping Rural Minority "Essential" Workplaces Open Safely During the COVID-19 Pandemic: the Role of Frequent Point-of-Care Molecular Workplace Surveillance for Miners FY22 \$701,030

National Institutes of Health
Effectiveness of Innovative Research Mentor Interventions Among Underrepresented Minority Faculty in the Southwest - FY22 \$726,154

Joao Teixeira

Astute Medical Inc.
AST-134: Urine Sample Processing Study: Analysis of Fresh Versus Frozen Urine Samples From ICU Subjects \$56,468

Jason Timm

Givaudan Flavors Corporation
Givaudan Research Agreement - Y14 \$205,000

Mark Unruh

Boston University Medical Center
Improving Medical Decision Making for Older Patients With End Stage Renal Disease - FY22 \$116,603

George Washington University
Implementing Advance Care Planning for Dialysis Patients \$107,022

Hennepin Healthcare Research Institute
HOPE CATI \$167,582

Honeywell Corporation
Occupational Medical Services \$25,000

Lovelace Respiratory Research Institute
Lovelace Respiratory Research Institute - Occupational Medicine Services - Continuation \$25,000

Lovelace Respiratory Research Institute
Occupational Medicine Consulting Services - Lovelace Respiratory Research Institute - Continuation \$25,000

University Of Pennsylvania
Computer Assisted Telephone Interview - Supplement \$45,450

University of Pittsburgh
Technology Assisted Stepped Collaborative Care Intervention to Improve Patient-Centered Outcomes in Hemodialysis Patients - Y5 \$40,240

University of Washington
Randomized ESRD Trial COmparing CBT Alone VERsus With Buprenorphine - FY 22 \$99,491

University of Washington
Treatment Options for Insomnia for ESRD - Y4 \$62,208

Zenith Administrators
Occupational & Environmental Health Services \$25,000

Bharah Yarlagadda

Duke Clinical Research Institute
ICE-PAD \$107,420

Molecular Genetics & Microbiology**Kiran Bhaskar**

Rainwater Charitable Foundation
Rainwater 30th Anniversary Tau Leadership Fellows \$10,000

Bryce Chackerian

Henry M. Jackson Foundation
Epitope-Based Vaccines for Neisseria Gonorrhoeae - Amendment 4 \$21,798

Henry M. Jackson Foundation
Epitope-Based Vaccines for Neisseria Gonorrhoeae - Year 4 \$195,279

Massachusetts General Hospital
Innate-Like BCR Activity as a Template for Universal Vaccination Against Influenza Virus - Year 5 \$70,949

National Institute on Drug Abuse
Bacteriophage Virus-Like Particle- Based Vaccines Targeting Opioids \$1,572,708

Vojo Deretic

National Institute of Allergy and Infectious Diseases
Autophagy Against Tuberculosis and HIV \$736,954

National Institute of Allergy and Infectious Diseases
Pattern Recognition Receptors and Autophagy in Mtb Control in AIDS - Year 25 \$479,513

National Institute of General Medical Sciences
Autophagy, Inflammation and Metabolism in Disease Center - Year 5 \$2,180,372

Kathryn Frieze

National Institute of Allergy and Infectious Diseases
Defining Chlamydia Trachomatis Adhesion Factor Epitope-Specific Antibody Responses, Functionality, and Roles in Protection Against Urogenital Infection - Non-Specific Supplement \$716

National Institute of Allergy and Infectious Diseases
Defining Chlamydia Trachomatis Adhesion Factor Epitope-Specific Antibody Responses, Functionality, and Roles in Protection Against Urogenital Infection - Year 2 \$42,826





Michael Mandell

National Institutes of Health
Cellular Responses to Retroviral Capsid Recognition \$414,823

National Institutes of Health
Cellular Responses to Retroviral Capsid Recognition - Year 2 \$414,823

Paulus Mrass

Nextcure
Evaluation of Cancer Immunotherapy \$121,197

Xuexian Yang

National Institutes of Health
The Cytokine Signal Suppressor CIS in Giant Cell Pneumonitis - Non-Specific Supplement \$37,875

National Institutes of Health
The Cytokine Signal Suppressor CIS in Giant Cell Pneumonitis - Year 3-Continuation \$340,875

Neurology

Corey Ford

Syneos Health
Calliper - Immunic AG_P2-IMU-838-PMS \$973,825

Omar Hussein

Alexion Pharmaceuticals, Inc.
Alexion_ALXN2050-MG-201 \$73,748

Monika Krzesniak-Swinarska

Muscular Dystrophy Association
UNM MDA and MDA/ALS Care Centers Continuation FY22 \$105,000

Surojit Paul

National Institute of Neurological Disorders and Stroke
Role of Brain Specific Tyrosine Phosphatase STEP in Neuroprotection and Death - Continuation FY22 \$503,383

Sarah Pirio Richardson

Addex Pharma, S.A.
Addex P2b/3 PD-L1D Study \$321,866
 Addex Pharma, S.A.
ADX48621-302 Open Label \$412,569

Emory University

Emory Subaward U54: Dystonia Coalition Continuation FY22 \$162,341

Scion NeuroStim, Inc.
STEM-PD Study \$12,800

Hae Shin

NeuroPace, Inc
RESPONSE \$85,269

University of California, San Francisco
BVMC3 Project 2 - SWS - Continuation FY22 \$3,790

University of North Carolina at Chapel Hill

Causal Investigation of the Functional Interactions of Theta and Alpha Neural Oscillations in Output-gating \$60,600

Rawan Tarawneh

Ohio State University
Alzheimer's Disease Biomarker for Diagnosis and Prognosis \$37,137

Michel Torbey

Covenant Hospital Hobbs
Telemedicine Services \$25,000

DiaMedica Therapeutics Inc.
Diamedica Therapeutics Inc. - ReMEDy II Trial \$385,635

Eastern New Mexico Medical Center
EEG Interpretations \$25,000

Lovelace Biomedical & Environmental Research Institute
Lovelace Biomedical Research Institute - Continuation FY22 \$22,019

University of California, San Francisco

Brain Vascular Malformation Consortium (BVMC3): Project 1, 6201- Modifiers of Disease Severity and Progression in Cerebral Cavernous Malformation \$124,185

University of Chicago

Trial Readiness in Cavernous Angiomas With Symptomatic Hemorrhage - Continuation FY22 \$17,750

Neurosciences

Lee Anna Cunningham

National Institute on Alcohol Abuse & Alcoholism
Network Mechanisms of Impaired Adult Hippocampal Neurogenesis in a Mouse Model of Prenatal Alcohol Exposure - Continuation \$340,875

Jonathan Brigman

National Institute on Alcohol Abuse & Alcoholism
Prenatal Alcohol Exposure and Corticostriatal Control of Behavioral Flexibility - Continuation \$301,358

David Linsenbardt

National Institute on Alcohol Abuse & Alcoholism
Repeated Binge Drinking and the Genetic Regulation of Corticostriatal Synchrony - Continuation \$222,335

National Institute on Alcohol Abuse & Alcoholism
Repeated Binge Drinking and the Genetic Regulation of Corticostriatal Synchrony - Non-Specific Supplement \$24,706

National Institute on Alcohol Abuse & Alcoholism

Repeated Binge Drinking and the Genetic Regulation of Corticostriatal Synchrony - Specific Supplement \$247,994

Samuel McKenzie

National Institute of Mental Health
Investigation Into the Synaptic Origins of Hippocampal Replay - Non-Specific Supplement \$41,267

Nikolaos Mellios

National Institute on Alcohol Abuse & Alcoholism
Sex-Dependent Effects of Prenatal Alcohol Exposure on Developmental Programming - Continuation \$334,690

Erin Milligan

National Institute on Alcohol Abuse & Alcoholism
Prenatal Alcohol Exposure Potentiates Pain Via Lifelong Spinal-Immune Changes - Continuation \$284,249

Shahani Noor

National Institute on Alcohol Abuse & Alcoholism
Prenatal Alcohol Exposure Generates Vulnerability to the Proinflammatory Effects of Morphine and Adverse Neuroimmune Consequences \$382,574

Nora Perrone-Bizzozero

Arizona State University
Role of Cirrhomer1 in Synaptic Plasticity and Cocaine-Seeking Behavior - Continuation \$74,353



University of South Carolina
*Destabilization of Axonal MRNAs by
 KHSRP Controls Axon
 Regeneration* \$29,903

Daniel Savage
 National Institute on Alcohol Abuse
 & Alcoholism
*Fetal Ethanol-Induced Behavioral Deficits:
 Mechanisms, Diagnoses and Intervention
 Competing Renewal -
 Continuation* \$1,495,477

Bill Shuttleworth
 National Institute of General
 Medical Sciences
UNM-CBRR - Continuation \$2,217,453

National Institute of General
 Medical Sciences
*UNM-CBRR - Specific
 Supplement* \$216,939

National Institute of Neurological
 Disorders and Stroke
*Spreading Depolarizations and Neuronal
 Vulnerability - Continuation* \$293,502

National Institute of Neurological
 Disorders and Stroke
*Spreading Depolarizations and Neuronal
 Vulnerability - Non-Specific
 Supplement* \$32,612

New Mexico State University
*New Mexico IDEeA Networks of
 Biomedical Research Excellence
 -bouchonville - Continuation* \$68,175

New Mexico State University
*New Mexico IDEeA Networks of
 Biomedical Research Excellence -
 Chackerian* \$18,938

New Mexico State University
*New Mexico IDEeA Networks of
 Biomedical Research Excellence -
 Continuation* \$182,926

New Mexico State University
*New Mexico IDEeA Networks of
 Biomedical Research Excellence -
 Mishra - continuation* \$151,500

Carlos Valenzuela
 National Institute on Alcohol Abuse
 & Alcoholism
*Alcohol Research Training in
 Neurosciences - Continuation* \$165,120

Jason Weick
 National Institute of Neurological
 Disorders and Stroke
*Molecular Mechanisms of Excitatory
 Postsynaptic Diversity - Non-Specific
 Supplement* \$37,875

National Institutes of Health
*Molecular Mechanisms of Excitatory
 Postsynaptic Diversity -
 Continuation* \$340,875

Tou Yia Vue
 National Institute of Neurological
 Disorders and Stroke
*Transcriptional Control of OPC Fate
 Specification and Homing to Gray Matter
 and White Matter in the CNS* \$368,086

Neurosurgery

Andrew Carlson
 Los Alamos National Laboratory
*LANL Collaboration -
 Continuation* \$50,000

University of Cincinnati
INDICT \$922,533

Christian Ricks
 The University of British Columbia
CASPER \$103,720

Meic Schmidt
 Lovelace Health System
Neurosurgery Call Coverage \$75,000

Presbyterian Healthcare Services
*Professional Services/Consultations -
 Continuation* \$402,000

Heather Spader
 The American Society of Pediatric
 Neurosurgeons
*Native American Head
 Circumference* \$20,000

Obstetrics & Gynecology

Eve Espey
 Albuquerque Area Indian Health
 Service
*OBGYN IHS Specialty Services -
 Continuation* \$72,490

First Choice Community
 Healthcare
Midwifery Services - Continuation \$95,260

New Mexico Department of Health
*Certified Nurse Midwife Contractor
 Project w/BAA - Non-Specific
 Supplement* \$1,925

Planned Parenthood of the Rocky
 Mountains
*Planned Parenthood at the Rocky
 Mountains - Continuation* \$25,000

St. Vincent Regional Medical
 Center
*OB/GYN Coverage Services -
 Continuation* \$25,000

Lisa Hofler
 RAD
RAD Equipment Grant \$47,000

Yuko Komesu
 Eunice Kennedy Shriver National
 Institute of Child Health and
 Human Development
*Innovations in Treatments for Pelvic Floor
 Disorders: a Southwestern PFDN Site -
 Specific Supplement* \$18,180

Medical College of Wisconsin
ROSETTA UDS DATA \$1,512

Research Triangle Institute
PFDN Capitation - Continuation \$19,695

Kate Meriwether
 Caldera Medical Inc.
Caldera Medical \$128,460

MedStar Health Research Institute,
 Inc.
SGS/CoRPS Vulvie \$15,500

PFD Research Foundation
MYPACE \$25,000

Society of Gynecologic Surgeons
SGS/CoRPS PoRS \$2,800

**Office of the Medical
 Investigator**

Lauren Decker
 New York University Grossman
 School of Medicine
*The SARS-CoV-2 Autopsy Cohort Post-
 Acute Sequelae of COVID Study -
 Phase 2* \$404,466

Heather Jarrell
 Lovelace Health System
*Lovelace Health System Autopsy Services
 FY22* \$25,000

Memorial Medical Center
*Autopsy Services Memorial Medical
 Center* \$5,000

New Mexico Department of Health
FY22 Mass Fatality Planning \$39,985

New Mexico Department of Health
*Workforce Development Staffing
 Project* \$133,854

Clarissa Krinsky
New Mexico Department of Health
FY 22 N.M. VDRS \$5,275

Sarah Lathrop
New Mexico Department of Health
FY20 Opioid Mortality Surveillance -
Continuation \$227,526

U.S. Consumer Product Safety
Commission
MECAP Reports - Continuation \$756

Lori Proe
National Center for Chronic Disease
Prevention and Health Promotion
OMI UNM SUID SDY 09/30/2021 -
09/29/2022 \$66,361

New Mexico Crime Victims
Reparation Commission
FY 22 Grief Services \$104,643

Ophthalmology & Visual Sciences

Robert Avery
Eye Associates of New Mexico
Neuro-Ophthalmology Services -
Continuation \$196,903

Elizabeth Cretara
American Glaucoma Society
Ocular Blood Flow in Patients With
Migraine \$10,000

Arup Das
National Eye Institute
Novel Biomarkers & Genetics of Diabetic
Retinopathy - Continuation \$610,716

New Mexico Commission for the
Blind
Emergency Eye Care Program
Continuation \$125,000

New Mexico Commission for the
Blind
Emergency Eye Care Program
Continuation - Non-Specific
Supplement \$25,000

U.S. Department of Veterans Affairs
N.M. VAHCS RNA Sequencing and Analysis
- Service Contract \$34,864

Veterans Health Administration
IPA With VA: Finny Swamidoss \$43,750

Alexander Davis
Southwest Eyecare Specialists, PC
Clinical Services - Continuation \$26,875

Dusanka Deretic
National Eye Institute
Rhodopsin Trafficking & Photoreceptor
Membrane Renewal -
Continuation \$367,387

Orthopaedics & Rehabilitation

Eric Benson
Balanced Physical Therapy and
Wellness LLC
Physical Therapists Evaluate and Treat
Patients \$25,000

Deana Mercer
Skeletal Dynamics
Grant for Research Assistant \$80,961

Beth Moody Jones
Langford Consulting, Inc.
Professional Services Agreement -
Continuation \$35,044

Dustin Richter
Arthroscopy Association of North
America
AANA Orthopaedic Sports Fellowship
2021-2022 \$5,968

Christina Salas
Sandia National Laboratories
3DBP for Bone Formation \$49,754

Robert Schenck
Lawson Health Research Institute
STABILITY Study II \$82,435

University of Pittsburgh
Surgical Timing and Rehabilitation for
Multiple Ligament Knee Injuries: A
Multicenter Integrated Clinical Trial -
Continuation \$3,272

University of Pittsburgh
Surgical Timing and Rehabilitation for
Multiple Ligament Knee Injuries: A
Multicenter Integrated Clinical Trial -
Specific Supplement \$2,848

University of Pittsburgh
Surgical Timing and Rehabilitation
for Multiple Ligament Knee Injuries: A
Multicenter Integrated Clinical Trial -
Continuation \$3,485

University of Pittsburgh
Surgical Timing and Rehabilitation
for Multiple Ligament Knee Injuries: A
Multicenter Integrated Clinical Trial -
Specific Supplement \$3,810

Selina Silva
Ann & Robert H. Lurie Children's
Hospital of Chicago
Infrastructure for Musculoskeletal Pediatric
Acute Care CT \$4,726

Pathology

Nadja Falk
TriCore Reference Laboratories
TO # 28 Hologic Digital Scanning
Study 2 \$12,985

Jennifer Gillette
National Heart, Lung, and Blood
Institute
Functional Role of Tetraspanin CD82 in
Hematopoietic Stem Cell
Interactions \$376,242

Nancy Joste
TriCore Reference Laboratories
Medical Director and Professional Services
- Continuation \$2,211,496

TriCore Reference Laboratories
TO # 27 Hologic Digital Scanning
Study 2 \$12,985

Tae-Hyung Kim
METAvivor
Harnessing Cell Mechanotype to Regulate
the Immune Evasion of Highly Metastatic
Breast Cancer Cells \$100,000

Diane Lidke
Genmab
Dissecting the Mechanisms of Action for
Hexabody-Driven DR5-induced Cell Death
- Continuation \$184,645

Los Alamos National Laboratory
System Dynamics of PD-1
Signaling in T Cells \$208,309

National Institute of General
Medical Sciences
Imaging the Early Events in Membrane
Receptor Signaling -
Continuation \$420,193

David Martin
TriCore Reference Laboratories
TO# 31 Leica Discovery Study \$11,295

Dennis McCance
University of Virginia
Biospecimen Procurement and Tissue
Microarray Manufacture for the CHTN -
Continuation \$128,337

Aaron Neumann
University of Colorado
Acoustofluidic Pipette for Rapid
Serodiagnosis of Candida Infection -
Continuation \$22,725

Kurt Nolte
Astho
Project ECHO Pilot - Drug Overdose
Training for Medical Examiners and
Coroners \$40,000

Jay Raval
CTI Clinical Trial Services Inc.
Effects of Plasma Exchange -
Non-Specific Supplement \$100,000

Rutgers, The State University of
New Jersey
Myocardial Ischemia and Transfusion -
CCC - Continuation \$42,000

TriCore Reference Laboratories TO #25_ventana PD-L1 (SP263) Cervical Cancer ILR	\$12,540	Oregon Health & Science University Regional Hemophilia Network-Mountain States - Continuation	\$353,921	Presbyterian Healthcare Services Pediatric Nephrology Services - Continuation	\$25,000
Samuel Reynolds TriCore Reference Laboratories TO# 30 Leica Discovery Study	\$11,295	Oregon Health & Science University Regional Hemophilia Network-Mountain States - Continuation Amend 6	\$38,250	The University of Texas Health Science Center at Houston UT Houston - Dr. Girardet Salary Agreement	\$31,030
TriCore Reference Laboratories TO# 32 Leica Human Factor Validation Study	\$2,860	Oregon Health & Science University Regional Hemophilia Network-mountain States - Continuation Amend 7	\$202,136	Theresa Cruz New Mexico Coalition of Sexual Assault Programs, Inc. CAC Data and Communications	\$37,000
Marian Rollins-Raval TriCore Reference Laboratories TO # 21_PBL Chromogenic Factor IX Study	\$3,250	Sanjiv Amin National Institutes of Health Improving Brain Myelination With Iron Supplementation in Term Infants - Continuation	\$630,493	New Mexico Department of Health Core SIPP	\$120,000
TriCore Reference Laboratories TO # 29 Precision Biologic Hexla Study	\$3,900	Tanya Baker-McCue New Mexico Developmental Disabilities Planning Council DDPC Health Access	\$10,000	New Mexico Department of Health Hospital-Based Infant Safe Sleep Project	\$31,650
TriCore Reference Laboratories TO #26 PBL Chromogenic Factor VIII Deficient VWR Study	\$3,250	New Mexico Division of Vocational Rehabilitation DVR Partners for Employment	\$410,000	New Mexico Human Services Department SNAP-ED Evaluation	\$272,024
Angela Wandinger-Ness East Carolina University Brody School of Medicine Ligand Specificity in Human Glucose Transporters GLUT1-5 and GLUT9	\$40,853	Sophie Bertrand N.M. Early Childhood Education and Care Department Home Visiting Training	\$876,847	Presbyterian Healthcare Services COVID-19 REACH	\$72,000
National Institute of General Medical Sciences Academic Science Education and Research Training - Continuation	\$1,046,100	Suzanne Burns University of Wisconsin Home Evaluation App for Community Independence: HESTIA-NextGen	\$45,206	Presbyterian Healthcare Services REACH	\$72,000
National Institute of General Medical Sciences FAIR Data Competency and Machine Learning Readiness for Biomedical Scientists	\$85,600	Anthony Cahill American Association on Health & Disability Project Accessibility USA: Health Promotion for Women With Disabilities - Specific Supplement	\$2,500	Sally Davis Centers for Disease Control and Prevention PRC Core - Continuation	\$311,237
Qian-Yun Zhang TriCore Reference Laboratories TO# 22 Siemens COVID Study	\$688	Glenda Canaca New Mexico Human Services Department Social Marketing	\$517,559	Centers for Disease Control and Prevention PRC Research - Continuation	\$438,662
Pediatrics Dawn (Walstrom) Novak Early Childhood Education and Care Department Developmental Care Continuity Program - Continuation	\$179,400	Loretta Cordova de Ortega Comagine Health In-Home Assessments for Medically Fragile Waiver w/BAA - Continuation	\$102,125	New Mexico Department of Health Implementing Evidence-Based Recommendations in Community Projects - Specific Supplement	\$11,258
Shirley Abraham American Thrombosis and Hemostasis Network American Thrombosis and Hemostasis Network Round 13	\$10,000	Comagine Health In-Home Assessments for Medically Fragile Waiver w/BAA - Continuation	\$102,125	W.K. Kellogg Foundation Early Childhood Landscape: WKKF	\$40,000
Hyundai Motor America (Hope on Wheels) 2021 Hyundai Hope on Wheels Impact Grant	\$100,000	Presbyterian Healthcare Services Pediatric Cardiac Anesthesia Services	\$25,000	Walter Dehority Pfizer, Inc. Pfizer Paxlovid COVID Study	\$209,880
Oregon Health & Science University ATHN_CDC_Public Health Surveillance for the Prevention of Complications of Bleeding Disorders - Continuation	\$28,194	Presbyterian Healthcare Services Pediatric Nephrology Medical Director Services - Continuation	\$3,952	PPD Investigator Services Moderna Peds COVID Vaccine Trial - Specific Supplement	\$1,102,450

Timothy Dionne Bureau of Health Professions <i>HRSA Scholarship for Disadvantaged Students - Continuation</i>	\$650,000	R.T. Keeler Foundation <i>Addressing Neonatal Opioid Withdrawal Syndrome in New Mexico</i>	\$25,000	Early Childhood Education and Care Department <i>ECEP and ECEP Part B</i>	\$1,215,600
Anna Duran Society to Improve Diagnosis in Medicine <i>DxQI</i>	\$49,995	Jean Lowe University of California, San Francisco <i>HEAL Continuation - Year 5</i>	\$14,014	Early Childhood Education and Care Department <i>FIT FOCUS</i>	\$128,376
Sandra Heimerl Inspirations Early Intervention <i>CP Early Detection</i>	\$9,000	University of Cincinnati <i>Medication Treatment for Opioid Use Disorder - Continuation</i>	\$15,279	Falling Colors Corporation <i>CYFD Home Visiting - PAT Bernalillo - Continuation</i>	\$1,605,146
New Mexico Developmental Disabilities Planning Council <i>New Mexico LEND Legislative Advocacy Workshop</i>	\$2,500	University of Cincinnati <i>Medication Treatment for Opioid Use Disorder in Expectant Mothers</i>	\$15,347	New Mexico Department of Health <i>DDSD Partners for Employment</i>	\$562,800
Priscilla Juarez County of Bernalillo <i>Professional Service Agreement - Continuation</i>	\$200,000	University of Utah <i>DARBE - Continuation Year 5</i>	\$129,416	New Mexico Department of Health <i>DDSD PFE Transition Project</i>	\$50,000
Rebecca Kilburn Albuquerque Public Schools <i>APS 1807</i>	\$77,971	Peggy MacLean Erikson Institute <i>Erikson FAN Training - Continuation</i>	\$22,950	New Mexico Department of Health <i>DOH Autism Programs - Continuation</i>	\$3,431,040
Institute of Education Science <i>Tipsbytext</i>	\$789,371	Ksenia Matlawska-Wasowska Gabrielle's Angel Foundation <i>The Roles of RUNX2 in the Pathobiology of T-cell</i>	\$20,000	New Mexico Department of Health <i>N.M. Access to Behavioral Health for Children (N.M.-ABC)</i>	\$1,629,367
New Mexico Department of Health <i>Youth Risk and Resiliency Survey</i>	\$174,214	National Institutes of Health <i>The Roles of SOCS5 in T-ALL Migration and Tissue Infiltration - Continuation</i>	\$343,258	New Mexico Department of Health <i>New Mexico Waiver Training Hub</i>	\$253,764
New Mexico Department of Health <i>Youth Risk and Resiliency Survey - Specific Supplement</i>	\$278,000	Jessie Maxwell Institute for Advanced Clinical Trials for Children <i>Advancing Standards and Methodologies to Generate Real-World Evidence From Real-World Data Through a Neonatal Pilot Project</i>	\$10,000	New Mexico Human Services Department <i>Improving Quality (75/25 & 50/20 Medicaid Match)</i>	\$10,000,000
New Mexico Public Education Department <i>PED Evaluation</i>	\$76,500	Marcia Moriarta Administration for Community Living <i>Public Health Worker Project</i>	\$113,670	Martha Muller Cystic Fibrosis Foundation <i>Cystic Fibrosis Center of New Mexico - CF Registry</i>	\$85,495
RAND Corporation <i>Taking Violence Prevention to Scale - Continuation</i>	\$125,703	Administration for Community Living <i>University Center for Excellence in Developmental Disabilities - Continuation</i>	\$641,610	Julia Oppenheimer Association of University Centers on Disabilities <i>Children's Mental Health Champion</i>	\$6,000
Alberta Kong Aleut-Odle Training and Development <i>Providing Medical Services at Albuquerque Job Corps</i>	\$159,440	Association of University Centers on Disabilities <i>COVID Vaccine Confidence Project</i>	\$37,722	Patricia Osbourn AIM Charter School <i>AIM Charter School Consultations</i>	\$4,400
Brindle Foundation <i>Optimizing Care for Neonatal Opioid Withdrawal Syndrome in Rural N.M.</i>	\$25,000	Early Childhood Education and Care Department <i>Early Childhood Evaluation Program</i>	\$495,600	Belen Consolidated Schools <i>Belen Consultations</i>	\$24,420
Brindle Foundation <i>Optimizing Care for Neonatal Opioid Withdrawal Syndrome in Rural N.M. - Non-Specific Supplement</i>	\$2,000	Early Childhood Education and Care Department <i>Early Childhood Evaluation Program - Continuation</i>	\$720,000		
New Mexico Department of Health <i>School Based Health Center Services - Specific Supplement</i>	\$60,000	Early Childhood Education and Care Department <i>Early Childhood Network</i>	\$492,000		
New Mexico Human Services Department <i>Envision N.M.: The Initiative for Child Healthcare Quality - Continuation</i>	\$4,400,000				



Central Consolidated School District <i>Central Consolidated Consultations</i>	\$14,650
Early Childhood Education and Care Department <i>Autism Training</i>	\$200,450
Gadsden Independent School District <i>Gadsden Consultations</i>	\$7,670
Laguna Department of Education <i>Laguna Pueblo Consultations</i>	\$7,315
New Mexico Developmental Disabilities Planning Council <i>DDPC Information Network</i>	\$160,000
New Mexico Developmental Disabilities Planning Council <i>Partners in Policy Making</i>	\$52,000
New Mexico Division of Vocational Rehabilitation <i>DVR Partners for Employment</i>	\$840,500
New Mexico Division of Vocational Rehabilitation <i>DVR STW - Pre-ETS</i>	\$400,000
New Mexico Public Education Department <i>PED Contract SET & DB</i>	\$438,391
Region IX Education Cooperative <i>Region IX Education Cooperative</i>	\$209,880
Rio Rancho Public Schools <i>Rio Rancho Consultations</i>	\$30,000
Sequel of New Mexico, LLC <i>Bernalillo Academy Consultations</i>	\$30,800
Silver Consolidated Schools <i>Silver Consolidated Schools Consultations</i>	\$20,558
Taos Day School <i>Taos Day School Consultations</i>	\$6,105
U.S. Department of Education <i>Project for N.M. Children Who Are Deaf-Blind</i>	\$107,912

Janet Poole
Scleroderma Foundation
Feasibility and Acceptability of the Making It Work Program for Systemic Sclerosis \$200,000

Hengameh Raissy
AstraZeneca Pharmaceuticals, LP AZ KALOS \$163,364

Mary Ramos
HBSA
N.M. School-Based Health Center Evaluation - Continuation \$30,000

New Mexico Alliance for School-Based Health Care
2022 SBHC Planning Grant \$11,000

Pacific Institute for Research & Evaluation
Implementing School Nursing Strategies to Reduce LGBTI Adolescent Suicide - Specific Supplement \$15,000

Pacific Institute for Research & Evaluation
Implementing School Nursing Strategies to Reduce LGBTI Adolescent Suicide - Specific Supplement \$15,000

Amy Staples
Akebia Therapeutics
KRX-0502-308 Akebia CKD Hyperphosphatemia Study \$140,000

Leslie Strickler
New Mexico Crime Victim Reparations Commission
ACCESS-VOCA Federal Grant \$72,064

Anjali Subbaswamy
Children's Hospital of Los Angeles
CHAT 1901 Rider \$10,150

Carla Sue Wilhite
New Mexico State University
New Mexico Agrability - Assistive Technology Program for Farmers With Disabilities - Continuation \$37,623

Jessica Valdez
Children's Hospital of Philadelphia
Clinical Trial - Non-Industry - Continuation \$75,000

Jessica Valdez
Children's Hospital of Philadelphia
Clinical Trial Agreement - Non-Specific Supplement \$6,000

Children's Hospital of Philadelphia
Clinical Trial Study: Phase 2 - Non-Specific Supplement \$18,000

Children's Hospital of Philadelphia
Quadw Foundation Childhood Sarcoma and Bio Grant \$10,606

Public Health Institute
ANBL1531-A Phase 3 Study of 131I Metaiodobenzylguanidine or Crizotinib Added to Intensive Therapy for Children \$89,960

Public Health Institute
COG NCTN Network Group Operations Center \$64,212

St. Baldrick's Foundation
Improving Access to Clinical Research Trials FY22 \$50,000

Monique Vallabhan
Brindle Foundation
Advancing Hepatitis C Detection and Treatment in Sandoval County Children \$27,000

Jennifer Vickers
New Mexico Department of Health
CORE - Non-Specific Supplement \$53,069

Kristi Watterberg
Eunice Kennedy Shriver National Institute of Child Health and Human Development
NICHD Cooperative Multicenter Neonatal Network - Continuation \$242,784

Eunice Kennedy
Shriver National Institute of Child Health and Human Development
NICHD Cooperative Multicenter Neonatal Network - Non-Specific Supplement \$26,978

Craig Wong
Nationwide Children's Hospital
CureGN II - Continuation \$15,500

The Children's Mercy Hospital
CKiD IV - Continuation \$16,911

The Children's Mercy Hospital
Genomic Research Results Disclosure Study \$24,369

Elizabeth Yakes Jimenez
New Mexico Children, Youth & Families Department
Telehealth and Instructional Design Support for the New Training Modules for the Comprehensive Addiction Recovery Act Work Group \$21,379

New Mexico Public Education Department
Improving Health and Academic Success Grant - Continuation \$25,300

Nan Zeng
New Mexico Human Services Department
Chile Plus \$398,418



Psychiatry & Behavioral Sciences

Christopher Abbott

Georgia State University
Data-Driven Approaches to Identify Biomarkers From Multimodal Imaging Big Data - Continuation (YEAR 3) \$21,807

National Institute of Mental Health
Electroconvulsive Therapy Amplitude Titration for Improved Clinical Outcomes in Late-Life Depression- Year 2 \$618,892

Deborah Altschul

Falling Colors Corporation
COVID-19 Emergency Response Supplement to Mental and Substance Use Disorders During COVID-19 \$196,500

Falling Colors Corporation
FEMA Crisis Counseling Program Regular Sevices Program - FY22 \$10,954

Falling Colors Corporation
FEMA Crisis Counseling Program Regular Sevices Program - Continuation \$67,808

Falling Colors Corporation
Multi-Systemic Therapy Data Reporting Initiative (MST Data) - FY22 \$31,400

Taos Pueblo Division of Health and Community Services
Taos Pueblo Tiwa Babies Program - FY22 \$40,000

Taos Pueblo Division of Health and Community Services
Taos Pueblo Tiwa Babies Program - FY23 \$50,000

David Arciniegas

Colorado State University
New Approach to Studying White Matter Aging \$3,577

University of Colorado
University of Colorado MIBH Consulting for Research - Arciniegas - (Continuation) \$120,337

Caroline Bonham

Falling Colors Corporation
Centers for Medicare & Medicaid Services Mobile Crisis Intervention Services Planning \$97,500

Falling Colors Corporation
Centers for Medicare and Medicaid New Mexico Substance Use Disorder Prevention that Promotes Opioid Recovery and Treatment for Patients and Communities Amendment 1 - Analysis of the Intersection Between Criminal Justice and Medicaid and Waiver Evaluation & Comprehensive Community Support Services \$137,937

Falling Colors Corporation
National Suicide Prevention Lifeline 988 Implementation (Lifeline 988 Implementation) \$135,000



Falling Colors Corporation
National Suicide Prevention Lifeline 988 Planning Initiative (Lifeline 988 Planning) \$43,392

Indian Health Service
IHS Tele-Behavioral Health, Training & Consultation - Continuation \$306,790

Indian Health Service
IHS Tele-Behavioral Health, Training & Consultation - Non-Specific Supplement \$500,000

New Mexico Indian Affairs Department
Suicide Prevention Support for the Indian Affairs Department of the State of New Mexico (FY22) \$125,000

Juan Bustillo

The Mind Research Network
COBRE III - Continuation 05/01/2022-04/30/2023 \$185,247

The Mind Research Network
COBRE III - Multimodal Imaging of Neuropsychiatric Disorder (Continuation YR4) \$112,180

Jennifer Crawford

Center for Substance Abuse Treatment
New Mexico FOCUS Medication-Assisted Treatment - Prescription Drug and Opioid Addiction Expansion \$525,000

Falling Colors Corporation
Adolescent Substance Use Reduction Effort - Treatment Implementation - Continuation \$40,000

Falling Colors Corporation
Adolescent Substance Use Reduction Effort - Treatment Implementation Evaluation \$67,000

Annette Crisanti

Albuquerque Police Department
City of Albuquerque Police Department Crisis Intervention Team ECHO Coordination \$99,999

Falling Colors Corporation
Comprehensive Opioid, Stimulants, Substance Abuse Site-Based Program Law Enforcement Assisted Diversion - Continuation \$111,000

Falling Colors Corporation
Crisis Triage Centers Learning Collaborative Transformation Transfer Initiative - Continuation \$21,483

Falling Colors Corporation
Opening Doors Through Services and Supports for Homeless Individuals with Serious Mental Illness or Co-Occurring Disorder - Continuation \$23,999

Falling Colors Corporation
Opening Doors Through Services and Supports for Homeless Individuals with Serious Mental Illness or Co-Occurring Disorder (Opening Doors) - Continuation \$94,720

Martha Faulkner

Falling Colors Corporation
Bridges to Wellness Evaluation, Promoting Integration of Physical and Behavioral Health Care - FY23 \$184,220

Falling Colors Corporation
Bridges to Wellness Evaluation, Promoting Integration of Physical and Behavioral Health Care - SFY22 Continuation \$184,220

New Mexico State University
NMSU Ethics Training Project \$35,000

Brian Isakson

Center for Health Innovation
RCORP Center for Health Innovation Curriculum Development \$25,000

Center for Substance Abuse Treatment
Increasing Behavioral Health Access Post-COVID Pandemic - Community Mental Health Centers - IBHA \$5,000,000

New Mexico Children, Youth & Families Department
SOC III - System of Care Expansion and Sustainability III - Specific Supplement \$165,000

David Lardier

Montclair State University
Paterson Coalition Against Substance Abuse \$10,000

Montclair State University
Strategic Prevention Framework - Partnerships for Success \$21,000



Montclair State University
The Paterson, N.J. / Montclair State
University Substance Misuse, HIV, and Viral
Hepatitis Prevention Navigator Initiative
for Racial/Ethnic Minorities Ages 13-24
(Prevention Navigator) \$25,000

New Mexico Public Education
Department
New Mexico Project AWARE (Advancing
Wellness and Resiliency in Education)
State Education Agency \$765,000

Christopher Morris
Falling Colors Corporation
Systems of Care III - CYFD - UNMMG -
Continuation Year 3 \$500,000

Julie Salvador
Agency for Healthcare Research
and Quality
ECHO-F Model to Expand Medication
Assisted Treatment in Rural Primary Care -
Yr 5 \$378,866

Falling Colors Corporation
N.M. State Opioid Response-2020
(N.M.SOR-2020) - Year 2 \$1,155,252

Mauricio Tohen
Arca Foundation
Medical Director Services -
Continuation \$12,000

Bernalillo Academy
Chart Reviews \$75,000

Bernalillo County
Psychiatric Services -
Continuation \$100,375

County of Bernalillo
Psychiatric Services -
Non-Compete Continuation \$100,375

Pueblo of San Felipe
Addiction Prescriber and
Child Psychiatry Services \$25,000

Universidad Central del Caribe
School of Medicine
First Episode Psychosis in Hispanic
and Latino Populations - Specific
Supplement \$1,000

Ann Waldorf
Substance Abuse and Mental
Health Services Administration
UNM-Provider's Clinical Support System
Nurse Practitioner & Expansion Project
(UNM-PCSS NP/E) \$150,000

Daniel Williams
Falling Colors Corporation
Assertive Community Treatment -
Continuation \$136,459

Maria Yellow Horse Brave Heart
Center for Substance Abuse
Treatment
Trauma Informed to Build Resilient,
Indigenous, Balanced Communities
Enhanced with Strength \$1,800,000

Radiology

Jacqueline Castro
Four Corners ASC
Qualified Medical Physicists
Services \$25,000

Gary Mlady
New Mexico Department of Health
DOH BCC Early Detection
Program \$126,941

New Mexico Department of Health
DOH BCC Early Detection Program -
Non-Specific Supplement \$84,400

Santo Domingo Health Center
Physicist Services - Non-Compete
continuation \$25,000

U.S. Department of Veterans Affairs
Provide Radiological and Nuclear Medicine
Diagnostics and Therapy Services for N.M.
VAHSC FY20 - Continuation \$3,641,085

U.S. Department of Veterans Affairs
Provide Radiological and Nuclear Medicine
Diagnostics and Therapy Services for N.M.
VAHSC FY20 - Non-Specific
Supplement \$35,773

U.S. Department of Veterans Affairs
Provide Radiological and Nuclear Medicine
Diagnostics and Therapy Services for N.M.
VAHSC FY20 - Non-Specific
Supplement \$750,378

X-Ray Associates of New Mexico
Physicist Services \$25,000

Sheila Hickey
Health Resources and Services
Administration
School of Medicine MD Scholarship for
Disadvantaged Students -
Continuation \$629,941

Surgery

Ross Clark
Exhalix, LLC
HEALS/Wound Healing Project \$98,754

John Marek
Presbyterian Medical Services
On-Call Surgical Services -
Continuation \$25,000

W.L. Gore & Associates
Vascular Surgery Support
Program \$4,000

UNM HOSPITAL

Rodney McNease
County of Bernalillo
Behavioral Health Services -
Continuation \$1,868,934

County of Bernalillo
Supportive Housing Services \$748,726

Robert Perry
Classic Air Medical
Helipad Usage \$25,000

New Mexico Department of Health
Medical Reserve Corps Volunteer Summit
and Transportation to the 2022 Bataan
Memorial Death March. \$65,320

A. Robb McLean
City of Albuquerque
Early Intervention for Children Services -
Continuation \$215,632

**UNM MEDICAL GROUP,
INC.**

A. Robb McLean
Albuquerque Healthcare for the
Homeless Inc
Locum Tenens Services \$25,000

Presbyterian Medical Services
Locum Tenens Services -
Continuation \$25,000

Pueblo of Isleta
Locum Tenens Services \$25,000



At The University of New Mexico, research is the heartbeat of progress, driving innovation, transforming education and shaping the future.

Your philanthropic spirit can spark groundbreaking research addressing societal challenges, from improving health care access to reducing health disparities and advancing knowledge for New Mexico and beyond.

Private gifts allow us to explore early-stage ideas that might not qualify for traditional funding sources. This work, made possible by your support, lays the foundation for discoveries that change lives. It can turn a dormant idea into a game-changing innovation.

Join UNM and the UNM Foundation, and become part of a team that propels progress, fosters talent and uplifts New Mexico.

Visit us at www.unmfund.org



OFFICE OF RESEARCH
1 University of New Mexico
MSC08-4560, Fitz Hall B-61
Albuquerque, NM 87131-0001

RESEARCH ANNUAL REPORT 2022

DISCOVERY



**TURNING RESEARCH
INTO CURES**